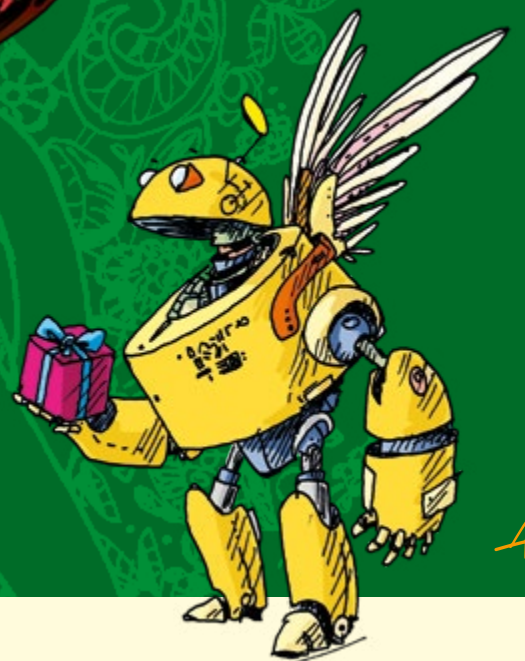


z o t t e r

CHRISTMAS CATALOGUE 2022



AHG

CONTENT




ADVENT CALENDARS p. 4


 SANTA CLAUS & KRAMPUS p. 12

CHRISTMAS p. 13

 HAND-SCOOPED CHOCOLATES p. 14

 CHOCO LOLLY p. 16

 SQUARING THE CIRCLE p. 16

 MI-XING STARS & HEARTS p. 17

MI-XING MINIS p. 22

LABOOKO p. 23

IN • FUSION p. 24

CHEERY & NUTS p. 24

BALLEROS p. 24

MITZI BLUE p. 25

CHOCO WITH NUTS p. 25

CLASSIC CHOCOLATE p. 25

CREMA PRALINE SPREAD p. 25

PRALINÉ p. 26

DRINKING CHOCOLATE p. 26

HAND-SCOOPED CHOCOLATE MINIS p. 26

CHRISTMAS TREE DECORATION p. 27

GIFT SETS WITH CHOCOLATE p. 28

GIFT SETS WITH BONBONS p. 29

ENDORPHINS CHOCOLATE BALLS p. 30

BIOFEKT BONBONS p. 31

CHOCOLATE SETS p. 32

 NEW YEAR p. 33



100% ORGANIC + FAIR + BEAN-TO-BAR

Our entire business is Fair Trade verified. We are a member of WFTO – the World Fair Trade Organization, which is the umbrella organization for global fair trade. The WFTO monitors business compliance with the 10 principles of fair trade like transparency, respect for the environment, the payment of fair prices and no use of child labour among others. For more on this, go to www.zotter.at/fair-trade and www.wfto.com

100% BEAN-TO-BAR: Zotter chocolates are produced starting from the bean in our bean-to-bar chocolate factory.

All the ingredients for the chocolate come from ORGANIC cultivation. The number of the organic board of control serves as identifying information. ORGANIC control number: AT-BIO-402

THE PROTECTION OF THE ENVIRONMENT

is a very important aspect of our corporate philosophy.

Our environmental protection and our environmental measures are ISO 14001 and EMAS certified. EMAS-certified companies are recorded in a Europe-wide register and are regularly checked and monitored on a national level by environmental experts approved by the environment department.

You can find our environmental declaration in German online at www.zotter.at

BIOPLASTIC

If possible, we try to use bioplastic as much as possible: it is derived from renewable materials, is biodegradable and even compostable according to European Standard 13432.

DESIGN

Designed by Andreas H. Gratz

We use certified paper and environmentally friendly colours for the packaging.

ORGANIC SOY LECITHIN

Zotter uses lecithin exclusively from controlled organic cultivation. Organic soy lecithin is guaranteed free from genetic engineering and protects the environment because no rainforests are cleared for its cultivation.

STORAGE ADVICE

We do not use any artificial stabilizers or preservatives. For this reason, our goods are more temperature sensitive than other high-quality chocolate products.

Ideally you should store Zotter chocolates in a cool and dry place where the temperature is between 16 °C and 18 °C.

You should not put the chocolates into a fridge. This way they would lose their substance because the humidity would let the sugar crystallise. If the temperature is too high, though, it will result in the emission of cocoa butter which will settle as a white film on the surface of the chocolate. The loss of the cocoa butter will dry out the chocolate – hence, the flavour of the chocolate will suffer.



THE 2022 CHRISTMAS COLLECTION

ADVENT CALENDARS, FESTIVE CHOCOLATES, GIFT SETS AND
CRACKING NEW YEAR'S GOODIES – ALL OF COURSE
ORGANIC + FAIR + BEAN TO BAR

Our Christmas range with English-language packaging

14 irresistible Christmas chocolates will make your festive season that much sweeter with honey nuts, cranberries, cinnamon apples, marzipan, pralines and more, 3 of which are entirely vegan. In addition, 5 wintry chocolate creations await, with caramelised almonds, gingerbread with a fruity plum and date filling, homemade mulled wine etc. We also offer a variety of delicious, Hand-scooped Chocolates for New Year's and St. Nicholas.

Our hand-decorated Mixing stars, hearts and bars are available in 2 price categories – Mixing and the more elaborately decorated Mixing Deluxe. All Mixings have been re-designed.

This year, we are again featuring two sweet gifts for chocolate nibblers big and small: the »Christmas Miracle«, sweetened with coconut sugar, and the »White Angel« chocolate lolly.

Our Christmas range with German-language packaging

All new in our Christmas programme is »A Christmas Dream« made from dark chocolate with fruity orange and passion fruit flavour from our In•Fusion range, the »Nut Cracker«, a caramel and peanut praline duo from the Cheery & Nuts range, a Mitzi Blue »From Your Christmas Elf« and some colourful »Christmas Crunchies« with nuts and fruit dunked in chocolate from the Balleros range. The Labooko »Miracles and Fairy Tales« has a magical new design and features 2 tender-melting vegan bars. Our popular Hand-scooped Christmas Minis come in exciting new flavours, and New Year's will bring a new »Lucky Charm« chocolate in a small 20g format.

8 heavenly Advent calendars

We are delighted to present our new »Best Of Advent Calendar«, filled with Hand-scooped Chocolates, drinking chocolates, pure chocos and bonbons, a creative mix highlighting Zotter's huge chocolate variety. The Hand-scooped Advent Calendar is sporting a beautiful new design in sophisticated black, white and gold as well as a heavenly Christmas package train, and it contains many new flavours like caramelised nuts, berry marzipan and fruity gingerbread. The Nashido Advent Calendar with its cream-filled chocolate bars also features an all-new, magical Christmas bauble design. Our classic Kids Advent Calendar with the colourful round chocolate discs will of course continue to be available, as well as a Labooko Advent Calendar for fans of top-notch pure chocolates, and a Vegan Advent Calendar with a wide variety of plant-based chocos. Our Drinking Chocolates Advent Calendar will get you safely through the festive season with many indulgent drinking chocolate flavours and hot drinks, and the Biofekt Bonbon Calendar will make the long wait for Christmas a lot more snackable with its many handmade, organic bonbons.

Naturally we are also offering new bonbon sets and freshly curated gift sets for you to discover.

All our products are created with love at our chocolate factory in Bergl/Austria and are ORGANIC, FAIR and BEAN TO BAR.

We wish you a happy browse to pick your festive range.

The Zotter Family



Zotter chocolate – made, bean-to-bar, at the Zotter family business.



Zotter chocolates represent:



- popular products
- a premium brand
- the highest quality
- variety & innovation
- a stunning design
- 100% organic + fair
- 100% made in Austria
- bean-to-bar – produced by us from the cacao bean to the finished chocolate bar
- 100% renewable energy, 60% own electricity generation
- many awards garnered for quality and CSR



ADVENT CALENDARS



NEW DESIGN

NEW FLAVOURS

HAND-SCOOPED ADVENT CALENDAR

ART.NO. 17919

A stylish, large-format wall Advent calendar, filled with 24 different Hand-scooped Chocolate Minis in seductive flavours like different praline variations, butter caramel, Marc de Champagne, berry marzipan and gingerbread with fruit. This stunning chocolate range in organic and fair trade quality and featuring an absolutely beautiful design will make your festive season even sweeter.

The calendar inlay is made from bioplastic, which is created with renewable materials only and thus compostable.

24 Hand-scooped Chocolate Minis at 20 g each = total net weight 480 g

Shelf life: 6 months from production date

Calendar dimensions: W: 48 cm x H: 33 cm x D: 1.8 cm

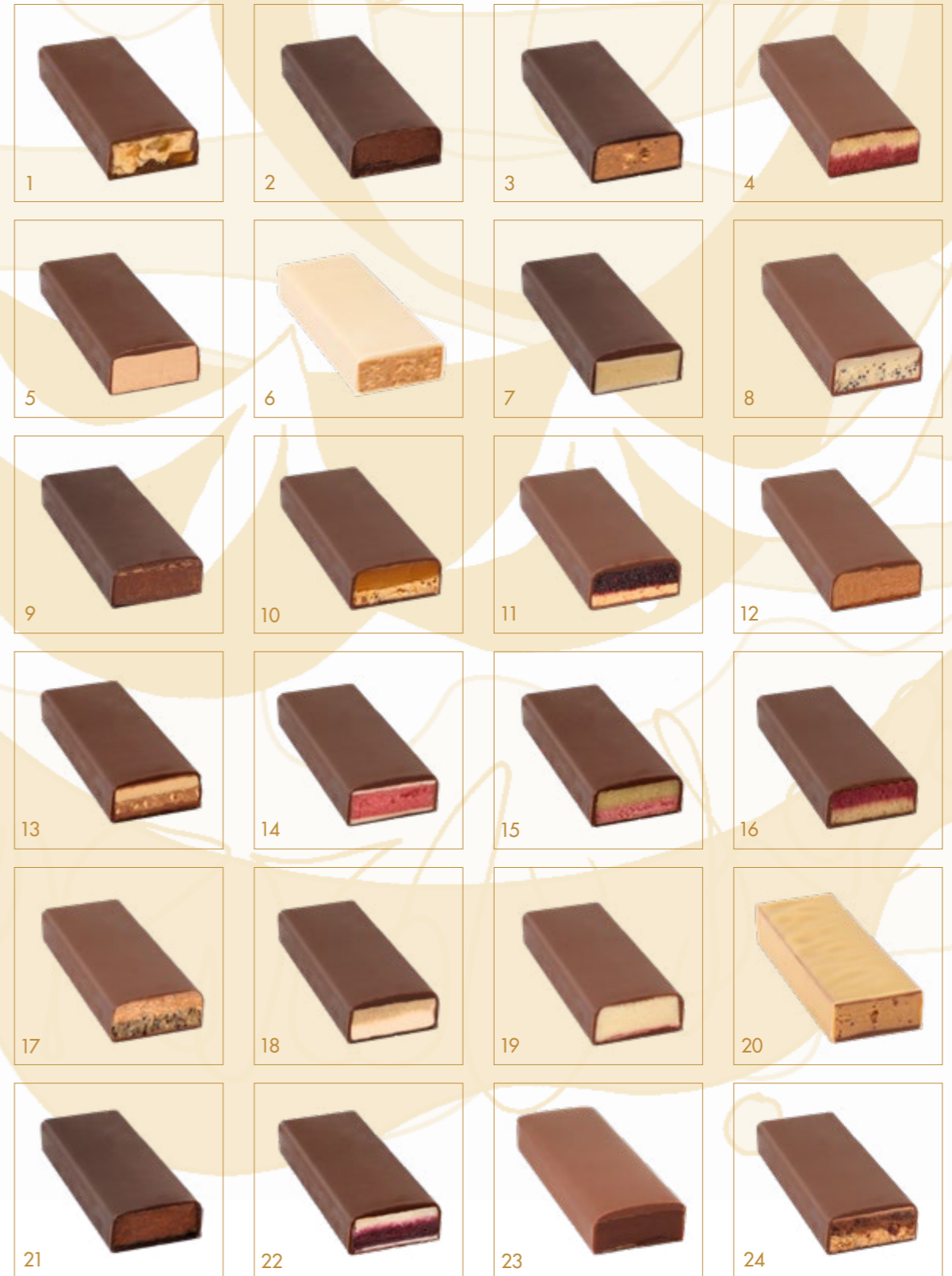
AVAILABLE ONLY WITH GERMAN COVER

Tip: you may want to order an Advent calendar poster Art.No. 23688 for presentation.

sales unit
= 5 pcs.



contains
gluten



Flavours

- NEW** 1. Caramelised Nuts
- 2. Whisky (alc.)
- 3. Hazelnut Brittle

- NEW** 4. Raspberry Coconut
- NEW** 5. "Lucky Charm" – Milk Choco Mousse
- NEW** 6. "For Good Ones" – Choco Bee
- 7. Hemp Bonbon

- NEW** 8. "Stress Stopper" – Blue Poppyseed
- 9. Plum Brandy (alc.)
- 10. ButterCaramel

- NEW** 11. Berry Marzipan
- 12. Orange Liqueur

- 13. Praline Variation
- 14. Amarena Cherry

- NEW** 15. Cherries & Pumpkin Marzipan
- 16. Wild Berries with Vanilla
- 17. Typically Austria

- NEW** 18. Marzipan and Almonds
- 19. Chocolate Banana
- 20. Caramel Praline

- NEW** 21. Marc de Champagne (alc.)
- NEW** 22. Blueberries + Lemon Cream
- 23. Cognac + Coffee (alc.)

- NEW** 24. "Sweet Christmas" –
Gingerbread & Fruit, contains gluten



NEW BEST OF ADVENT CALENDAR

ART.NO. 18900

contains
gluten

Our big mixed chocolate calendar celebrates our huge range of chocolates with Hand-scooped Chocolates, organic bonbons, drinking chocolates, pure chocolate bars and little Nashido bars with creamy fillings. 24 different varieties and flavours from nutty, fruity and caramel ones to festive gingerbread and fruit chocos. The calendar is alcohol-free, and the beautiful chocolate colours are derived entirely naturally from berries and other fruit. Featuring a magical fairy-tale carousel design and gold embossing, this calendar will be a delicious accompaniment throughout the festive season. And of course, all ingredients are ORGANIC + FAIR.

The calendar inlay is made from bioplastics, produced from renewable raw materials that don't hurt the environment.

24 chocolates & bonbons = 300 g
Shelf life: 4 months from production date
Calendar dimensions: W: 47.2 cm x H: 32.3 cm x D: 3 cm

AVAILABLE ONLY WITH GERMAN COVER

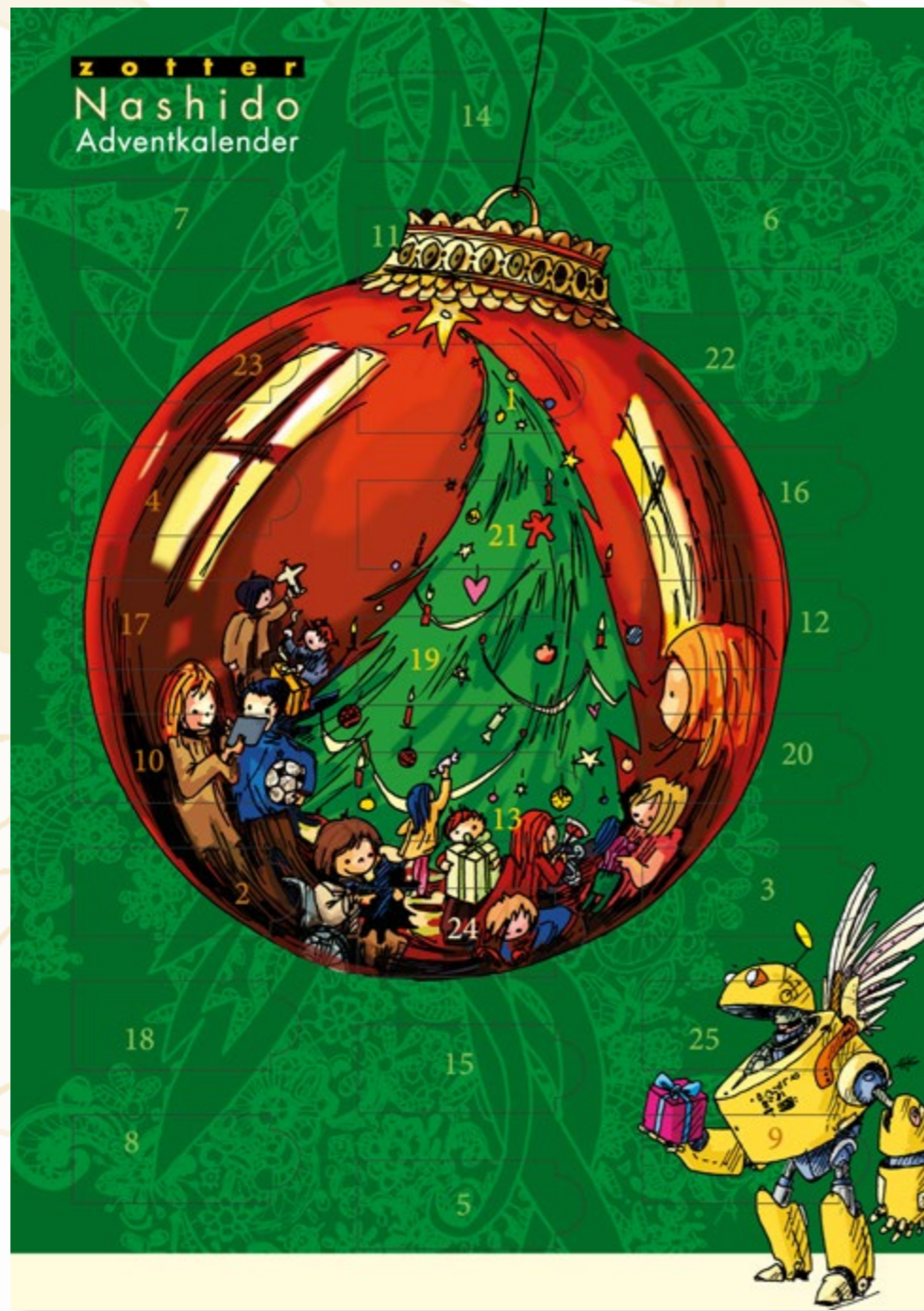
Tip: you may want to order an Advent calendar poster
Art.No. 23698 for presentation.

sales unit
= 5 pcs.



Flavours

- | | | |
|--|---|--|
| 1. Biofekt: Blackcurrant Lavender Pot | 8. Hand-scooped: "For Sweet Angels" – Choco Bee | 17. Squaring the Circle: Coconut Caramel with Coconut Sugar |
| 2. Labooko: 82% Belize »Sail Shipped Cacao« | 9. Biofekt: Almond Praline Cube | 18. Hand-scooped: Amarena Cherry |
| 3. Kids: Caramel | 10. In • Fusion: Lemon in Cacao | 19. Praliné: Brazil Nut Praline |
| 4. Biofekt: Coconut Endorphin | 11. Hand-scooped: Praline Variation | 20. Kids: White Chocolate |
| 5. Nashido: Peanut | 12. Praliné: Hazelnut Praline | 21. Hand-scooped: Marzipan & Almonds |
| 6. Squaring the Circle: 50% Milk Choco with Date Sugar | 13. Kids: Strawberry | 22. Labooko: 50% Ecuador Milk Chocolate |
| 7. Fruit Bar: Cranberry | 14. Hand-scooped: Butter Caramel | 23. Drinking Chocolate: Winter Magic |
| | 15. Nashido: Peppermint | 24. Hand-scooped: "Sweet Christmas" – Gingerbread & Fruit, contains gluten |
| | 16. Drinking Chocolate: Bitter Classic | |



NEW DESIGN

NASHIDO ADVENT CALENDAR

ART.NO. 17572



A large wall calendar containing fine, thin mini chocolate bars with delicious, creamy fillings in seductive flavours like Red Wine, Grappa, Marc de Champagne, classic Peppermint, fruity Redcurrant and Raspberry and tender-melting praline. The slim Nashido shape is elegant and a veritable celebration for the palate with its delicious flavour and seductively quick melt. As a delicious little surprise, we've added a 25th sweet: a pure coffee bar, which you can enjoy on Christmas Day but definitely also sooner.

The calendar inlay is made from bioplastic, which is derived from renewable raw materials and doesn't harm the environment.

AVAILABLE ONLY WITH GERMAN COVER

Tip: you may want to order an Advent calendar poster Art.No. 23690 for presentation.



25. There is a surprise 25th chocolate bar in there, a pure Coffee Labooko Mini.

Flavours

- 1. Raspberry
- 2. Whisky (alc.)
- 3. Caramel Praline
- 4. Grappa (alc.)
- 5. Redcurrant
- 6. Marc de Champagne (alc.)
- 7. Peppermint
- 8. Red Wine (alc.)
- 9. Raspberry
- 10. Caramel Praline
- 11. Peanut
- 12. Whisky (alc.)
- 13. Redcurrant
- 14. Red Wine (alc.)
- 15. Peppermint
- 16. Hazelnut
- 17. Grappa (alc.)
- 18. Peppermint
- 19. Marc de Champagne (alc.)
- 20. Raspberry
- 21. Peanut
- 22. Hazelnut
- 23. Whisky (alc.)
- 24. Caramel Praline

24 filled mini chocolates at 8.5 g + 1 pure mini chocolate at 8 g = total net weight 212 g
Shelf life: 6 months from production date
Calendar dimensions: W: 29.5 cm x H: 42 cm x D: 1.6 cm

**sales unit
= 5 pcs.**



ADVENT CALENDAR FOR KIDS

ART.NO. 24103

A big chocolate calendar filled with lots of colourful chocolate discs and featuring a beautiful, magical Christmas design. Behind each door, there's a small, round chocolate bar in 12 different flavours from candy-sweet caramel, the finest praline made of cashews, hazelnuts and almonds, white chocolate and milk chocolate to bright fruit bars like strawberry and raspberry, their stunning colours and delicious flavours derived entirely naturally from fruit. There are also fruity white coconut and banana chocolate discs, which will make the hearts of little chocoholics beat faster. All of course completely ORGANIC + FAIR, to benefit our children and our environment.

The calendar inlay is made from bioplastic, which is derived from renewable raw materials and doesn't harm the environment.

24 colourful chocolate discs, 10 g ea. = 240 g
Shelf life: 14 months from production date
Calendar dimensions: W: 48 cm x H: 33 cm x D: 1.8 cm

AVAILABLE ONLY WITH GERMAN COVER

Tip: you may want to order an Advent calendar poster
Art.No. 23685 for presentation.

sales unit
= 5 pcs.



Flavours

- 1. Coconut
- 2. 35% Milk Chocolate
- 3. Raspberry
- 4. Almond Praline
- 5. 50% Milk Chocolate
- 6. Banana
- 7. Cashew Praline
- 8. Caramel

- 9. Strawberry
- 10. 40% Milk Chocolate
- 11. Hazelnut Praline
- 12. White Chocolate
- 13. Coconut
- 14. 35% Milk Chocolate
- 15. Raspberry
- 16. Almond Praline

- 17. 50% Milk Chocolate
- 18. Banana
- 19. Cashew Praline
- 20. Caramel
- 21. Strawberry
- 22. 40% Milk Chocolate
- 23. Hazelnut Praline
- 24. White Chocolate



LABOOKO ADVENT CALENDAR

ART.NO. 17750

The flip-up Labooko Advent calendar is filled with 24 different flavours for fans of sublime, first-rate pure chocolate. Small Labooko minis will whisk you away to the wonderful world of cacao, introducing you to ever-increasing cacao percentages starting with a sweet milk chocolate and finishing with a powerful 100% cacao bar. Experience rare cacao varieties from many different countries, like the legendary Maya cacao from Belize or the African island cacao from Madagascar, and let some seductive caramel, coconut, coffee, white chocolate and pink raspberry coconut make this festive season even sweeter.

A beautiful Advent calendar with two wings you can flip up just like the smaller Labooko packs – free-standing without using a single nail or hook. The stunning design alone makes the Labooko Advent calendar an atmospheric and conveniently flexible decoration, which you can display wherever the mood strikes you.

The calendar inlay is made of paper, to benefit our environment.

AVAILABLE ONLY WITH GERMAN COVER

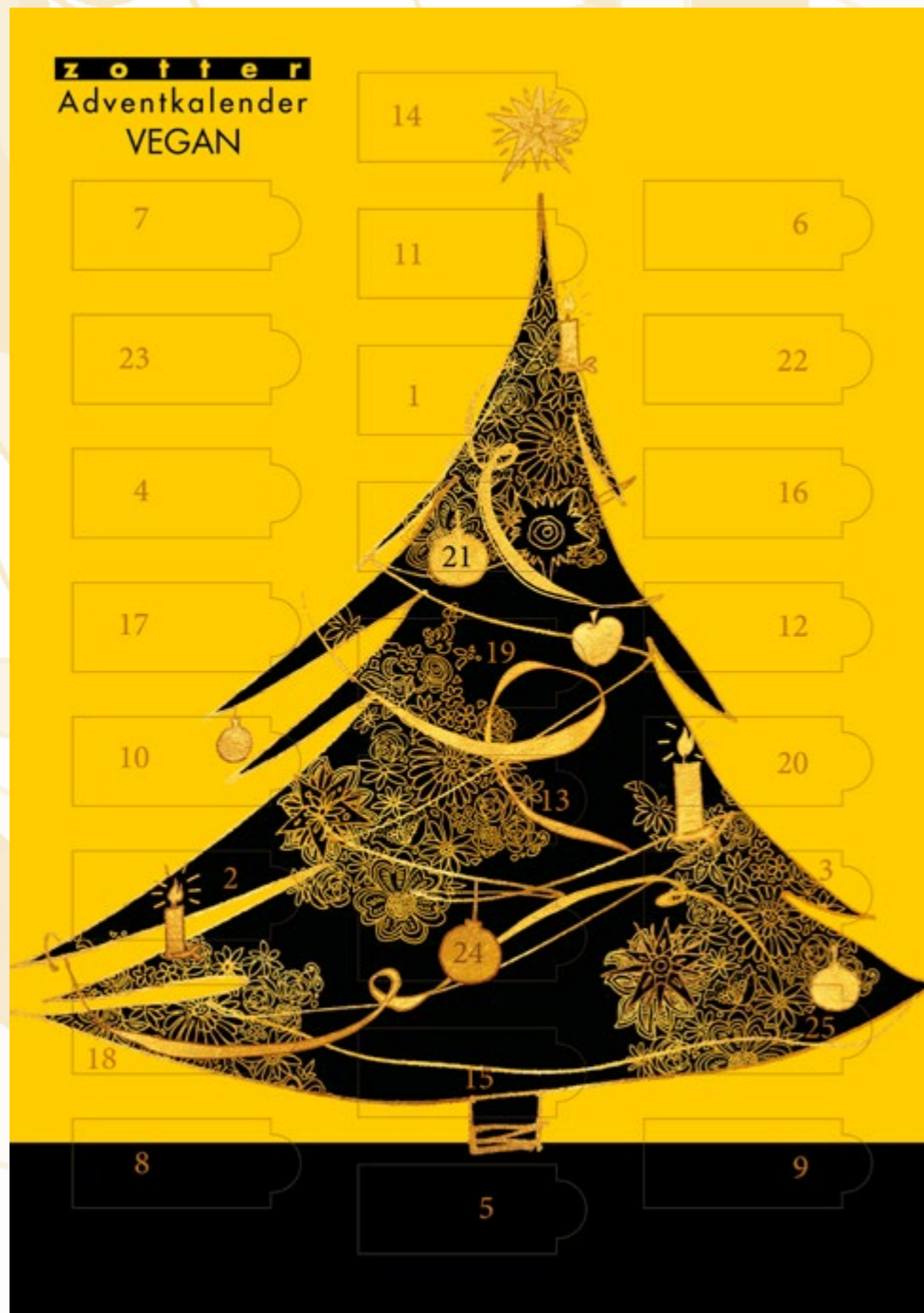
Tip: you may want to order an Advent calendar poster Art.No. 23689 for presentation.

Flavours

- | | |
|------------------------------------|---|
| 1. 62% Dominican Republic | 13. 72% Brazil |
| 2. 50% Ecuador Milk Chocolate | 14. 70% Peru Milk Chocolate |
| 3. 75% Tanzania | 15. 75% Madagascar |
| 4. Coconut | 16. 40% Dominican Republic Milk Chocolate |
| 5. 90% Bolivia | 17. 75% Guatemala |
| 6. 60% Nicaragua Milk Chocolate | 18. Coffee |
| 7. 82% Belize »Sail Shipped Cacao« | 19. 75% São Tomé |
| 8. 68% Togo | 20. 45% Peru Milk Chocolate |
| 9. 100% Peru | 21. 70% Uganda |
| 10. 35% Panama Milk Chocolate | 22. Raspberry Coconut |
| 11. 70% India | 23. 72% Panama |
| 12. Fine White Chocolate | 24. Caramel |

24 pure mini chocolates at 8 g each = total net weight 192 g
Shelf life: 12 months from production date
Calendar dimensions: W: 17 cm x H: 37 cm x D: 3 cm

sales unit
= 5 pcs.



ADVENT CALENDAR »VEGAN«

ART.NO. 17850



Our vegan Advent calendar with its stunning fir tree design is filled with 24 pure mini chocolates in 13 different flavours – fine hazelnut and Brazil nut praline and colourful fruit bars made from cranberry and raspberry coconut, their beautiful colours derived entirely from berries. Also featuring vegan white chocolate alternatives, dark Labooko classics made from rare cacao varieties from all over the world and a pure 100% cacao bar. As a reward for a busy Santa Claus or maybe just as a calming snack for busy you, we've added a 25th bar, filled with a refreshing peppermint mousse.

AVAILABLE ONLY WITH GERMAN COVER

Tip: you may want to order an Advent calendar poster Art.No. 23686 for presentation.



Flavours

- | | |
|------------------------------------|-------------------------------------|
| 1. 75% Madagascar | 13. 75% Madagascar |
| 2. Raspberry Coconut | 14. Raspberry Coconut |
| 3. Brazil Nut Praline | 15. Brazil Nut Praline |
| 4. 90% Bolivia | 16. 90% Bolivia |
| 5. Soy | 17. Soy |
| 6. 82% Belize »Sail Shipped Cacao« | 18. 82% Belize »Sail Shipped Cacao« |
| 7. Rice White | 19. Rice White |
| 8. Cranberry | 20. Cranberry |
| 9. 70% Uganda | 21. 70% Uganda |
| 10. Hazelnut Praline | 22. Hazelnut Praline |
| 11. 100% Peru | 23. 100% Peru |
| 12. Coconut | 24. Coconut |
| | 25. Nashido Peppermint |



25

25. Nashido Peppermint
There is a surprise 25th chocolate bar in there, filled with peppermint mousse.

The calendar inlay is made from bioplastic, which is created with renewable materials only.

24 pure mini chocolates at 8 g each + 1 filled Nashido bar at 8.5 g = total net weight 200 g
Shelf life: 6 months from production date
Calendar dimensions: W: 29.5 cm x H: 42 cm x D: 1.6 cm

sales unit
= 5 pcs.



DRINKING CHOCOLATE ADVENT CALENDAR ART.NO. 17920

A calendar with just drinking chocolates containing 24 of them to enjoy hot in festive mugs on a cosy evening with friends. 16 different flavours from fragrant honey and cinnamon to the nectar of the gods featuring divinely smelling tonka beans, classics like Almond Praline, Bitter Classic and Caffè Latte to the spicy Bird's Eye Chilli and aromatic Winter Magic with oranges and cinnamon.

AVAILABLE ONLY WITH GERMAN COVER

Tip: you may want to order an Advent calendar poster Art.No. 23691 for presentation.



Flavours

- | | | |
|-----------------------|--------------------|------------------------|
| 1. Almond Praline | 9. Xocitro 100% | 17. Nut Praline |
| 2. Nectar of the Gods | 10. White Vanilla | 18. Chilli Bird's Eye |
| 3. Cashew | 11. Hemp Drink | 19. Winter Magic |
| 4. Cinnamon Banana | 12. Bitter Classic | 20. Nectar of the Gods |
| 5. Caramel | 13. Milk Cocoa | 21. White Vanilla |
| 6. Nut Praline | 14. Green Tea | 22. Almond Praline |
| 7. Winter Magic | 15. Caffè Latte | 23. Caramel |
| 8. Honey Cinnamon | 16. Cashew | 24. Honey Cinnamon |

The calendar inlay is made from bioplastic, which is created with renewable materials only.

24 drinking chocolates at 22 g each = total net weight 528 g
Shelf life: 14 months from production date
Calendar dimensions: W: 48 cm x H: 33 cm x D: 1.8 cm

sales unit = 5 pcs.



EXTREMELY FANCY

& UNBELIEVABLY DELICIOUS



BIOFEKT ADVENT CALENDAR (ORGANIC BONBONS)

ART.NO. 17389

A golden, three-dimensional star, decorated with many small presents containing 24 handmade, natural, deliciously organic bonbons created without any artificial flavouring, which will sweeten the wait until Christmas is here. There are 24 different flavours, some boozy with mulled wine, rum and Marc de Champagne, some fruity with raspberries, oranges and cranberries, some seductively nutty with almonds, hazelnuts and pistachios. Everything is, of course, organic and fair traded – something practically unheard of in the bonbon department.

The Biofekt Advent Calendar is packed in pieces and can be assembled easily at home. Whoever puts it together should open the present with the big 0 on it and enjoy the very first bonbon.

AVAILABLE ONLY WITH GERMAN COVER

Tip: you may want to order an Advent calendar poster Art.No. 23687 for presentation.



contains
gluten

Flavours

- 0. Vanilla
- 1. Heart Berry
- 2. Coffee Endorphin (alc.)
- 3. Cashew Tonka Pot
- 4. Pecan Praline
- 5. Pumpkin Seed Endorphin
- 6. Peanut Praline
- 7. Raspberry Endorphin (alc.)
- 8. Almond Pot
- 9. Caramel Praline
- 10. Pistachio
- 11. Cinnamon Endorphin
- 12. Salted Caramel Pot
- 13. Orange Passion Fruit Endorphin
- 14. Limoncello (alc.)
- 15. Rosé Wine Endorphin (alc.)
- 16. Blackcurrant Lavender Pot
- 17. Marc de Champagne Endorphin (alc.)
- 18. Cranberry Bonbon
- 19. Mulled Wine Endorphin (alc.)
- 20. Gingerbread Endorphin (alc.), *contains gluten*
- 21. Hazelnut Praline Light
- 22. Almond Endorphin (alc.)
- 23. Coconut and Rum (alc.)
- 24. Almond Praline Light

Enjoy the first chocolate as a reward for the assembly of the star.

25 bonbons at 6 g = total net weight 150 g
Shelf life: 4 months from production date
Calendar dimensions: W: 37 cm x H: 36 cm x D: 38 cm

sales unit
= 5 pcs.

KRAMPUS + SANTA CLAUS



HAND-SCOOPED CHOCOLATE

FOR GOOD ONES

Choco Bee ART.NO. 16009
With the legendary 1994 St. Nicholas design. Chocolate for people with a clean record. Tasty honey petals hum and crackle in a white chocolate cream enhanced with almond praline. Coated with white chocolate.

FOR RASCALS

Nut Delight ART.NO. 16015
With the iconic 1994 Krampus design. For nut aficionados: a tender-melting hazelnut praline made from many dark, roasted hazelnuts and pure cocoa butter, enhanced with roasted bits of cashew, almond and hazelnut as well as a hint of cinnamon and Bourbon vanilla. It's coated in a delicious milk chocolate with a satisfying 60% cacao content.

DEVIL'S PLUMS

Plum Brandy ART.NO. 16218
Rustic devil chocolate filled with a plum brandy which has been stored in a barrel for a long time and which heats up this dark chocolate. Nibbling on this chocolate will result in a pleasantly warm feeling which will help you to endure the colder days.

70 g bar, shelf life: 6 months from production date

sales unit = 10 pcs.

sales unit = 5 pcs.



CHOCO LOLLY DEVIL'S ALMONDS Almond Chocolate

ART.NO. 25409

The almond chocolate lolly tastes devilishly good. Zotter whips up an almond praline out of sweet Spanish almonds which is combined with white chocolate and vanilla and fits perfectly into every Christmas stocking.

20 g lollipop
Shelf life: 14 months from production date
AVAILABLE ONLY WITH GERMAN PACKAGING

sales unit = 10 pcs.



CLASSIC NUT KRAMPUS Hazelnut Kiss

NEW DESIGN

ART.NO. 18566

A milk chocolate bar kissed by a tender hazelnut praline created with freshly roasted hazelnuts.

70 g bar, shelf life: 14 months from production date
AVAILABLE ONLY WITH GERMAN PACKAGING

sales unit = 10 pcs.

LABOOKO DEVIL + SANTA CLAUS Raspberry & 35% Milk Chocolate Panama

Chocolates from the bag of benevolent Santa Claus. 2 different bars in one package: one a fruity-red raspberry bar – its sublime colour and flavour derived from nothing but fruit. The other one a milk chocolate made from an extraordinary cacao variety, cultivated by indigenous people in the rain forests of Panama.

2 x 35 g bar, shelf life: 10 months from production date
AVAILABLE ONLY WITH GERMAN PACKAGING

sales unit = 10 pcs.

sales unit = 5 pcs.



BIOFEKT POP SANTA CLAUS + DEVIL

NEW FLAVOURS

ART.NO. 17266
Santa Claus chocolate box with 8 handmade, fresh chocolates of the following flavours:

- Salted Caramel Pot
- Heart Berry
- Pumpkin Seed Endorphin
- Hazelnut Praline Cube
- Almond Praline Light
- Passion Fruit Endorphin
- Caramel Bonbon
- Strawberry Endorphin

8 bonbons, 6 g each = 48 g
Shelf life: 4 months from production date
The inlay is made out of bioplastic.
Size: B: 12.5 cm x H: 12.5 cm x T: 3 cm

AVAILABLE ONLY WITH GERMAN PACKAGING

sales unit = 4 pcs.

SWEETS FOR CHRISTMAS





HAND-SCOOPED CHRISTMAS CHOCOLATES



70 g bar
Shelf life: 6 months from production date

sales unit
= 10 pcs.

sales unit
= 5 pcs.



NEW

A WONDERFUL CHRISTMAS TIME Cranberry



This sublime, fragrant and very berry mousse is bright pink and created from vegan cranberry couverture, white rice couverture and lots of cranberries. It has a tender mousse texture and a happy, intense cranberry flavour, characteristically fruity-tangy. Covered in a dark chocolate with a 70% cacao content. Entirely vegan.

ART.NO. 16620



NEW

FOR THE BEST EMPLOYEE IN THE WORLD!

Cherries & Pumpkin Marzipan

A sweet thank you to all employees who have been working extra hard. A cherry marzipan indulgence: a fruity-pink cherry filling, some refreshing lemon, a little marzipan and vanilla alongside a rich, green, super soft marzipan layer enhanced with pumpkin seed marrow. It's all coated in a milk chocolate with a boasting 60% cacao content.

ART.NO. 16618



NEW

SASSY ANGEL

Honey Nuts

Nutty marzipan magic: a heavenly soft almond marzipan layer, sweetened with honey, on a second layer made from tender-melting almond praline enhanced with a bit of white chocolate and homemade honey and nut brittle. For this brittle, we bathe bits of caramelised almonds and hazelnuts in honey before throwing them in the praline. All of this is covered in milk chocolate with a 50% cacao content.

ART.NO. 16617



CHRISTMAS MAGIC

Choco Bee

White Christmas: Austrian honey hums and tasty honey rice crisps crackle in a white chocolate cream enhanced with almond praline. Coated with white chocolate.

ART.NO. 16033





CRACKLING CHRISTMAS Apple Pie



Pieces of dried apples in honey caramel whisper softly in a layer of cinnamon and white chocolate. Enwrapped in milk chocolate.

ART.NO. 16036



FOR ANGELS Praline Variation

Alternating layers of light almond praline and dark hazelnut praline, refined with crunchy hazelnut brittle. Immersed in milk chocolate with 60% of cacao content.

ART.NO. 16011



FROM THE CHRISTMAS WORKSHOP French White Nougat

French white nougat hailing from Montélimar is a veritable delicacy and extremely difficult to create. We dared to try, produced an otherworldly delicious and sweet white cloud and dunked some chopped pistachios and hazelnuts in it. We added a layer of homemade almond praline and covered the bar in an elegant milk chocolate coat with a confident 60% cacao content.

ART.NO. 16288



GREETINGS FROM SANTA Marc de Champagne



A Fleury Marc de Champagne, organic and bearing a Demeter certification, enveloped by a dark chocolate ganache, it will get you into the festive spirit. It comes covered in a dark, 70% chocolate.

ART.NO. 16427



HAPPY HOLIDAYS Hazelnut Brittle



A tender-melting hazelnut praline made from many dark-roasted hazelnuts and pure cocoa butter, enhanced with a crunchy hazelnut brittle, Bourbon vanilla and cinnamon. Enveloped in dark chocolate with a 70% cacao content and huge character. Completely vegan!

ART.NO. 16463



HEAVENLY DELIGHT Nut Delight

For nut aficionados: a tender-melting hazelnut praline made from many dark, roasted hazelnuts and pure cocoa butter, enhanced with roasted bits of cashew, almond and hazelnut as well as a hint of cinnamon and Bourbon vanilla. It's coated in a delicious milk chocolate with a satisfying 60% cacao content.

ART.NO. 16558



HOLY NIGHT – BURNING BRIGHT Roasted Almonds

Fresh from your local Christmas market: a homemade almond praline using roasted and caramelised chopped almonds in dark milk chocolate with a 50% cacao content, this delicacy brings back all manner of sweet, delicious and nutty taste memories from our childhood.

ART.NO. 16334

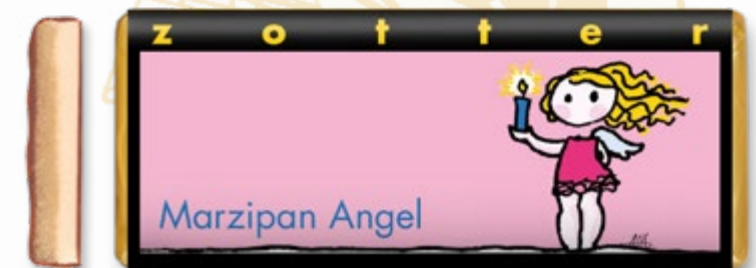


JINGLE BELLS ROCK Marzipan + Red Wine



A festive red wine ganache made from vegan soy chocolate with a 40% cacao content, a bit of dark chocolate, red wine from Schönberger vineyard as well as some cloves and a seductive almond marzipan layer. Enveloped in dark chocolate with a 70% cacao content. Completely vegan!

ART.NO. 16386



MARZIPAN ANGEL Almond Praline and Marzipan

A milk chocolate with a 50% cacao content, filled with a tender-melting almond praline made with freshly roasted almonds, enhanced with a hint of white chocolate and topped with a second layer of almond marzipan.

ART.NO. 16291



MERRY CHRISTMAS Spiced Marzipan on Cinnamon Praline

This milk chocolate perfectly sums up the smell and taste of the Christmas season. Filled with a layer of spicy marzipan onto which homemade hazelnut praline blended with aromatic and spicy cinnamon is spread.

ART.NO. 16290



WINTER SPECIALS



NEW

CANDIED ALMONDS

A delicious filling of homemade almond praline enhanced with white chocolate. A stunning almond brittle made with freshly caramelised candied almonds will put you in a festive mood. And as a delicious finish, a tender milk chocolate coat with a 50% cacao content.

ART.NO. 16619



NEW

EGGNOG

The white chocolate and almond praline ganache is buzzing with eggnog. Nobly refined with real vanilla, which is the second most expensive spice in the world after saffron, because the orchid blossom is pollinated by hand. Wrapped in a milk chocolate with a cacao content of 50%. Available all year round as part of our standard range.

ART. NO. 16331



NEW

GINGERBREAD & FRUIT, *contains gluten*

A fruity gingerbread choco: one layer of almond praline amplified with gingerbread spice, freshly baked pieces of actual gingerbread, some orange oil and a sprinkling of white chocolate, combined with a fruity plum and date layer sweetened with date syrup and enhanced with genuine vanilla. A wafer-thin caramel couverture on top and a deliciously dark chocolate at the bottom, and all around a coat of the finest milk chocolate with a 40% cacao content.

ART.NO. 16621



MULLED WINE

Heats up and brightens up the mood when the days are frosty and black. A mulled wine ganache is glowing under a milk chocolate coating, with mountain milk from Tyrolean mountain farmers. With red wine from Schönberger (Burgenland/Austria), the winemaker who used to play in the legendary Austrian music band EAV (Erste Allgemeine Verunsicherung). Notes of cinnamon, cloves and lemon put you into a Christmas mood.

ART.NO. 16300



PUNCH

A milk chocolate filled with a delicious, cinnamon enhanced honey ganache, with an orange jelly covered in a thin, white chocolate layer and infused with sublime vodka, mixed in turn into a sweet potato ganache accentuated with a fruity apricot and a sweet caramel couverture.

ART.NO. 16457



Choco Lolly



WHITE ANGEL White Chocolate

An angel comes bearing white chocolate made from raw cane sugar, lots of precious cocoa butter and sublime mountain milk.

ART.NO. 25410

20 g lollipop
Shelf life: 14 months from production date

sales unit
= 10 pcs.

Squaring the Circle

THE CHOCOLATE WITH TRENDY SUGAR ALTERNATIVES



CHRISTMAS MIRACLE Coconut Caramel with Coconut Sugar

ART.NO. 18613



A vegan coconut caramel bar with an exciting coconut flavour and a fine, caramelly sweetness. Created from coconut milk, caramelised, finely milled coconut flakes, 40% cacao and coconut sugar which is derived from the flower buds of the coconut tree and develops a beautiful caramel flavour.

70 g bar
Shelf life: 14 months from production date

sales unit
= 10 pcs.



Mi-Xing Hearts

with Christmas decor



1



2



3



At least 100 g bar
Shelf life: 4 months from production date

sales unit
= 5 pcs.

NEW

1. DARK CHOCOLATE HEART

ART.NO. 45057

A chocolate heart made from a dark fine flavour chocolate and decorated with a milk chocolate pattern and a sweet caramel vanilla chocolate star. Also featuring some roasted cashews and roasted pumpkin seeds in a pink raspberry couverture and in white chocolate, as a colourful accessory.

NEW

2. WHITE CHOCOLATE HEART

ART.NO. 45058

A white chocolate heart decorated with a fruity apricot couverture pattern and some delicious milk chocolate. It's festively decorated with a sweet caramel vanilla chocolate star as well as bits of apple rolled in cinnamon, roasted pumpkin seeds in a pink raspberry couverture and in some dark chocolate.

NEW

3. VEGAN HEART WITH A FRUITY STAR

ART.NO. 45059

A chocolate heart made from a dark fine flavour chocolate and decorated with a white soy couverture pattern. It's festively decorated with a pink cranberry chocolate star, fine coconut flakes, crunchy green tea chocolate flakes and fruity cranberries.





Mi-Xing Stars

with Christmas decor



1



2



3



At least 100 g bar
Shelf life: 4 months from production date

sales unit
= 5 pcs.

NEW

1. WHITE & MILK CHOCOLATE STAR

ART.NO. 45053

A chocolate star made with milk and white chocolates, dotted with crispy raspberry chocolate fruit bits and decorated with white coconut flakes, roasted pumpkin seeds in a pink raspberry couverture and crunchy orange chocolate fruit bits.

NEW

2. FRUITY STAR WITH BERRIES

ART.NO. 45051

A chocolate star made from a fruity blackberry couverture, its stunning colour derived entirely from berries, and decorated with a fruity-exotic passion fruit couverture pattern. It's festively decorated with a sweet caramel vanilla chocolate star, roasted pumpkin seeds in white chocolate and a pink raspberry couverture as well as some crispy mango chocolate fruit bits and a green tea chocolate flake.

NEW

3. COCONUT & CARAMEL STAR

ART.NO. 45052

A chocolate star made from a white coconut couverture and decorated with a candy-sweet caramel couverture pattern. It's festively accessorised with a fruity cranberry chocolate star, its beautiful colour derived entirely from berries, and some roasted pumpkin seeds in dark chocolate, crispy passion fruit chocolate fruit bits and crunchy cacao nibs in a pink raspberry couverture.



Mi-Xing

Rudolph Deluxe

the sweet reindeer



4



5



6



NEW

4. VEGAN DARK CHOCOLATE STAR

ART.NO. 45054

A vegan chocolate star made with a dark fine flavour chocolate and decorated with a plant-based white rice couverture pattern. It's accessorised with a bright, fruity-red cranberry chocolate star as well as roasted almonds, crunchy green tea chocolate flakes and apple bits rolled in cinnamon, all to properly sweeten your festive season.

VEGAN

NEW

5. VEGAN STAR IN WHITE

ART.NO. 45055

A vegan chocolate star made with a white soy chocolate and decorated with a pretty pattern created with a 40% cacao content soy chocolate, a delicious, purely plant-based milk chocolate alternative. It's accessorised with a green tea chocolate heart, crimson power goji berries, a roasted pumpkin seed in a dark chocolate and some caramelised almonds.

VEGAN

NEW

6. VEGAN RASPBERRY COCONUT STAR

ART.NO. 45056

A chocolate star made with a vegan raspberry coconut couverture, its stunning colour derived entirely from berries, and decorated with a white soy chocolate pattern. It's festively accessorised with a green tea chocolate heart, white coconut flakes, crunchy green tea chocolate flakes and roasted pumpkin seeds in dark chocolate.

VEGAN

NEW

RUDOLPH - THE RASPBERRY-NOSED REINDEER - DELUXE ART.NO. 45070

A white chocolate disc filled with a fruity raspberry mousse and decorated with a reindeer with a bright red nose made from a crunchy raspberry cacao nib. It features marzipan eyes, a milk chocolate head and antlers made with delicious almond couverture. It's covered all over with coconut flakes, crispy passion fruit and blueberry chocolate fruit bits and accessorised with a small cranberry chocolate star.

At least 100 g bar
Shelf life: 4 months from production date

sales unit
= 5 pcs.





Mi-Xing Stars Deluxe

with Christmas decor



1

At least 100 g bar
Shelf life: 4 months from production date

sales unit
= 5 pcs.



2



3



4

NEW

2. STAR WITH CHRISTMAS TREE DELUXE

ART.NO. 45060

A chocolate star made from a dark fine flavour chocolate and decorated with a Christmas Tree pattern created with sweet, white chocolate. The little tree is accessorised with crispy passion fruit chocolate fruit bits and crunchy cacao nibs in a pink raspberry couverture. The tips of the star are festooned in some caramelised almonds and roasted pumpkin seeds in white chocolate.

NEW

3. STARRY SKY DELUXE

ART.NO. 45062

A milk chocolate star filled with a fine almond praline and decorated with white chocolate in the shape of a night sky with a gingerbread chocolate moon rising. Featuring some crispy passion fruit chocolate fruit décor and some roasted pumpkin seeds in dark chocolate and a pink raspberry couverture.

NEW

4. VEGAN STAR WITH RASPBERRY TIPS DELUXE

ART.NO. 45063

A vegan chocolate star made from a fine flavour chocolate, filled with a sublime hazelnut brittle praline. It's festively decorated with two white coconut chocolate moons, coconut flakes, apple bits rolled in cinnamon and roasted pumpkin seeds in dark chocolate. The tips of the star shine in a pink raspberry coconut couverture and white rice couverture pattern.



NEW

1. STAR WITH A SANTA HAT DELUXE

ART.NO. 45061

A chocolate star made with a candy-sweet caramel couverture, wearing a super cute Santa hat created with a fruity-red raspberry couverture with white coconut flake rims and a coconut couverture with coconut flake bobble. Featuring marzipan eyes, a red raspberry nose with a crunchy cacao nib and green tea chocolate hearts alongside some caramelised almonds for mittens.





Mi-Xing

Hearts Deluxe

with Christmas decor



1



2



3



At least 100 g bar
Shelf life: 4 months from production date

sales unit
= 5 pcs.

NEW

1. MILK CHOCOLATE HEART DELUXE

ART.NO. 45064

A chocolate heart made from milk chocolate, festively filled with a tender-melting almond praline, and decorated with two white coconut chocolate moons, crispy orange chocolate fruit bits, green tea leaves and crunchy cacao nibs in a fruity raspberry couverture, its stunning colour derived entirely from berries. It's accessorised with a pretty pattern created with almond chocolate and some fruity apricot couverture.

NEW

2. WHITE CHOCOLATE HEART DELUXE

ART.NO. 45065

A chocolate heart made from white chocolate and filled with a fruity raspberry mousse. It's festively decorated with two red cranberry chocolate stars, crispy passion fruit and blueberry chocolate fruit bits, crunchy green tea chocolate flakes and roasted pumpkin seeds in a pink raspberry couverture, and it features a pretty milk chocolate pattern. All its beautiful colours are of course derived entirely naturally, from berries and other fruit.

NEW

3. VEGAN DARK CHOCOLATE HEART DELUXE

ART.NO. 45066

A vegan chocolate heart made from a dark fine flavour chocolate filled with a tender-melting hemp praline. It's festively decorated with two white gingerbread chocolate moons, crimson power goji berries, roasted hemp seeds and crispy green tea chocolate flakes hanging off a purely plant-based white chocolate garland.





Mi-Xing Minis Deluxe

with sweet Christmas stars

Shelf life: 4 months
from production date

sales unit
= 5 pcs.



NEW

2 CHRISTMAS MINIS DELUXE, contains gluten
ART.NO. 45067

Two small chocolate bars with a festive decor.

1. One small white chocolate bar, festively decorated with a fruity-red cranberry chocolate star, its stunning colour derived entirely from berries. Also featuring apple bits rolled in cinnamon and some crispy blueberry chocolate fruit bits.

2. One dark fine flavour chocolate filled with a fine almond praline and decorated with a sweet caramel vanilla chocolate star, crispy passion fruit chocolate fruit bits and crunchy raspberry chocolate flakes.

Wrapped in a festively decorated gift box.

Minimum bar weight: 25 g, total weight 50 g

AVAILABLE ONLY WITH GERMAN PACKAGING

NEW

2 VEGAN CHRISTMAS MINIS DELUXE
ART.NO. 45068



Two small vegan chocolate bars with a festive decor.

1. One vegan white rice-based bar, decorated with a red cranberry chocolate star, fruity cranberries and crispy green tea chocolate flakes.

2. One dark fine flavour chocolate bar filled with a fine hazelnut brittle praline and festively decorated with a gingerbread chocolate moon and twinkly apple bits rolled in cinnamon.

Wrapped in a festively decorated gift box.

Minimum bar weight: 25 g, total weight 50 g

AVAILABLE ONLY WITH GERMAN PACKAGING

NEW

4 CHRISTMAS MINIS DELUXE, contains gluten
ART.NO. 45069

Four small chocolate bars with a festive decor.

1. One small white chocolate bar, festively decorated with a fruity-red cranberry chocolate star, apple bits rolled in cinnamon and some crispy blueberry chocolate fruit bits.

2. One dark fine flavour chocolate filled with a sublime almond praline and decorated with a sweet caramel vanilla chocolate star, crispy passion fruit chocolate fruit bits and crunchy raspberry chocolate flakes.

3. One white coconut bar, decorated with crispy blueberry chocolate fruit bits and roasted pumpkin seeds in a pink raspberry couverture.

4. One blackberry fruit bar, its beautiful colour derived entirely from berries, decorated with a white coconut chocolate moon and some crispy mango chocolate fruit bits.

Wrapped in a festively decorated gift box.

Minimum bar weight: 25 g, total weight 100 g

AVAILABLE ONLY WITH GERMAN PACKAGING



Labooko

FINE DARK CHOCOLATES & CARAMEL BARS & WHITE CHOCOLATES

2 x 35 g bar
Shelf life: 14 months from production date
AVAILABLE ONLY WITH GERMAN PACKAGING

sales unit
= 10 pcs.

sales unit
= 5 pcs.



The finest festive chocolate bars.

Using noble cacao and organic milk and soy, we produce the most sublime pure chocolates, bean-to-bar.

CHIMES – 68% Togo & 40% Milk Chocolate Dominican Republic

ART.NO. 20162

Features a delicious mix of light and dark tones. 2 different bars in one package: one a dark single origin chocolate with the first ever fair traded organic cacao from Togo. The other a milk chocolate made with mild Zorzal cacao, a huge boost for environmental protection by being harvested in the middle of an actual bird sanctuary.

CHRISTMAS MAGIC – 72% Belize »Sail Shipped Cacao« & 70% Uganda

ART.NO. 20161

Sophisticated & dark. 2 different chocolate bars in one package: one dark single origin chocolate created with the mythical Maya cacao, transported to us from Belize via sailboat, entirely emission-free. And one dark single origin chocolate made with hand-picked cacao from the »Mountains of the Moon« region in Uganda.



NEW DESIGN

NEW FLAVOURS

MIRACLES AND FAIRY TALES – Coconut & 40% Soy

ART.NO. 20157

Vegan & sweet. 2 different chocolate bars in one package: one cheeky white coconut bar featuring desiccated coconut, coconut milk and a seductive, exotic flavour, and one delicious soy-based milk chocolate alternative that promises pure chocolate indulgence with a 40% cacao content.



QUIET & UNNOTICED – Fine White Chocolate & Caramel

ART.NO. 20173

White Christmas! 2 different chocolate bars in one pack: one is a white Christmas classic that melts in the mouth both delicately and sweetly, despite the icy outside temperatures. The other is a caramel couverture with a nice bonbon flavour. Sweetened with natural muscovado sugar.



IN·FUSION

A chocolate classic enhanced with a fruit couverture



NEW

A CHRISTMAS DREAM Passion Fruit and Orange in Cacao

ART. NO. 18657

Dark chocolate with a classic 70% cacao content enhanced with 2 types of couverture – passion fruit and orange. It combines a sublime chocolate indulgence with sweet and tangy citrus fruit. This goes very well with the cacao's natural aroma profile, which is full of citrus notes. It also gets its tender melt from pure cocoa butter. Created, bean-to-bar, using fine flavour cacao and freeze-dried orange juice and passion fruit. A dark chocolate with a refreshing orange and passion fruit flavour – an absolute zinger!

70 g bar
Shelf life: 14 months from production date
AVAILABLE ONLY WITH GERMAN PACKAGING

sales unit
= 10 pcs.

Cheery & Nuts



NEW

NUT CRACKER Caramel & Peanut

ART.NO. 25861

Sweet & salty: on the outside, a caramel couverture tasting seductively of caramel bonbons, on the inside a tender-melting peanut praline made with freshly roasted peanuts and filled with lots of small chopped peanuts. Enhanced with a pinch of salt, which goes very well with the nuts. The salty note also makes for an elegant pillow for the sweetness and creates a fabulous balance with some fine cocoa butter melt.

70 g bar
Shelf life: 14 months from production date
AVAILABLE ONLY WITH GERMAN PACKAGING

sales unit
= 10 pcs.

sales unit
= 5 pcs.

balleros

The fun snack with style!



NEW

CHRISTMAS CRUNCHIES Candied almonds, crunchy praline bonbons, peanuts, cranberries, macadamias and passion fruit pearls

ART.NO. 19083

A fun, colourful snack with fruit and nuts featuring caramelised almonds covered in milk chocolate, the finest almond brittle in a candy-sweet caramel coat, crispy passion fruit covered in a sunny, yellow passion fruit couverture, crunchy salted peanuts dunked in a caramel couverture and dark fine flavour chocolate, dried cranberries in red cranberry couverture as well as buttery-sweet macadamia nuts in a purple blackberry couverture.

100 g pack
Shelf life: 12 months from production date
AVAILABLE ONLY WITH GERMAN PACKAGING

sales unit
= 6 pcs.



Mitzi Blue

Caramel with crispy decoration



NEW

FROM YOUR CHRISTMAS ELF ART. NO. 24140
Crispy Caramel

The sweetest caramel bonbon: a sweet caramel disc with a seductive caramel bonbon flavour, enhanced with tiny caramel crisps and combined with a small, pure caramel disc – to make your day a little sweeter.

70 g bar
Shelf life: 14 months from production date
AVAILABLE ONLY WITH GERMAN PACKAGING

sales unit = 10 pcs.

Choco with Nuts



The crunchy chocolate with bite, for fans of nutty treats.



CRISPY ANGEL ART.NO. 25889
Grape + Nut

A crunchy classic: freshly roasted and roughly chopped hazelnuts, almonds and cashews meet some raisins and together, they're plunged into delicious milk chocolate enhanced with homemade hazelnut praline, lending it an even nuttier, tender-melting flavour.

70 g bar
Shelf life: 14 months from production date
AVAILABLE ONLY WITH GERMAN PACKAGING

sales unit = 10 pcs.

sales unit = 5 pcs.

Classic Chocolate

A chocolate classic in a large format with nuts and cinnamon will bring you some Christmas cheer.

HAPPY CHRISTMAS
Almond Brittle

ART.NO. 18562

A nutty chocolate bar created with a mixture of almond praline and white chocolate that isn't too sweet but contains lots of organic, whole mountain milk from Austria's Tyrol region as well as crispy almond brittle and a little dash of cinnamon.

70 g bar
Shelf life: 14 months from production date
AVAILABLE ONLY WITH GERMAN PACKAGING

sales unit = 10 pcs.



Crema

A fine, sweet and spreadable praline cream

CINNAMON PRALINE

ART.NO. 19533

Nutty and spreadable cinnamon praline made with freshly roasted almonds and hazelnuts, which we turn into a fine praline, in-house at our own factory. It's enhanced for more cream with home-pressed almond and hazelnut oils and we've also added lemon-fresh verjus, fragrant rose oil and of course some cinnamon for that X-mas feel.

130 g spread in a jar
Shelf life: 14 months from production date
AVAILABLE ONLY WITH GERMAN PACKAGING

sales unit = 4 pcs.





Praliné

to make nuts melt



CHRISTMAS PRALINÉ ART.NO. 25440
Cashew Praliné

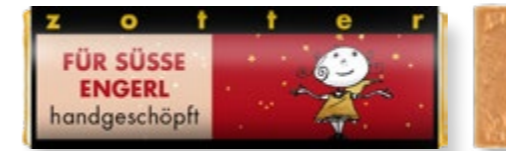
A homemade, wonderfully tender-melting cashew praline. At Zotter's, we roast our cashews very gently – which is the secret to retaining the fine flavour of a perfectly roasted cashew. We throw a little milk chocolate and a touch of fruity pineapple couverture into the mix to add even more excitement to this delicious praline adventure.

70 g bar
Shelf life: 12 months from production date
AVAILABLE ONLY WITH GERMAN PACKAGING

sales unit = 5 pcs.

sales unit = 10 pcs.

HAND-SCOOPED CHRISTMAS MINIS



NEW FLAVOUR

FOR SWEET ANGELS ART.NO. 17967
Choco Bee

AVAILABLE ONLY WITH GERMAN PACKAGING



NEW FLAVOUR

SWEET CHRISTMAS ART.NO. 17968
Gingerbread & Fruit, contains gluten

AVAILABLE ONLY WITH GERMAN PACKAGING



Box dispenser with 25 chocolate bars
Individual bars are 20 g each
Shelf life: 6 months from production date

sales unit = 25 pcs./box

DRINKING CHOCOLATE



WINTER MAGIC ART.NO. 21070
Almond Coconut with Cinnamon and Orange

A hot chocolate for cold, wintery days created with a combination of nutty almond praline and a white coconut and rice couverture. Oranges, cinnamon and gingerbread spices give it some fruity and seasonal accents.

110 g package
Shelf life: 14 months from production date
AVAILABLE ONLY WITH GERMAN PACKAGING

sales unit = 6 packages

WINTER MAGIC – BULK ART.NO. 21170
Almond Coconut with Cinnamon and Orange

28 pieces including display

22 g bar
Shelf life: 14 months from production date
AVAILABLE ONLY WITH GERMAN PACKAGING

sales unit = 28 pcs./box



SWEET CHRISTMAS TIME



SWEET CHRISTMAS TIME contains gluten ART.NO. 18741
A sweet gift set with 5 different Hand-scooped Chocolate Minis.

Flavours:
Sweet Christmas (Gingerbread & Fruit), contains gluten
For Sweet Angels (Choco Bee)
Lucky Charm (Milk Choco Mousse)
Marzipan and Almonds
Praline Variation

NEW DESIGN

NEW FLAVOURS

100 g package
Shelf life: 6 months from production date
AVAILABLE ONLY WITH GERMAN PACKAGING

sales unit = 6 packages



CHRISTMAS TREE DECORATION FESTIVELY DECORATED!



NASHIDO CHRISTMAS TREE DECORATION CHOCOLATES WITH CREAMY FILLINGS ART.NO. 17574

10 Christmas tree ornaments with cool robot angel designs and thin Nashido bars with creamy fillings in two flavours. Candy-sweet caramel bars filled with the finest hazelnut praline and almond praline alongside some wafer-thin milk chocolates with a fruity-pink raspberry centre and a dash of lemon. They come with gold ribbons, all ready to hang on your tree.

- 10 bars with two flavours:
- Caramel Praline
 - Raspberry

10 bars at 8.5 g each = 85 g
Shelf life: 6 months
from production date

AVAILABLE ONLY WITH
GERMAN PACKAGING

sales unit =
6 packages



CHRISTMAS TREE DECORATION MILK CHOCOLATE

10 Christmas tree ornaments with festive designs featuring milk chocolates and sweet white chocolate bars as a delicious seasonal snack. They come with gold ribbons, all ready to hang on your tree.

- 10 bars with two flavours:
- 40% Milk Choco Dominican Republic
 - Fine White Chocolate

ART.NO. 17851



AVAILABLE ONLY WITH GERMAN PACKAGING

CHRISTMAS TREE DECORATION VEGAN BARS

10 vegan Christmas tree ornaments with festive designs will make your tree even sweeter, created with a white, rice-based chocolate alternative and a magical, fruity raspberry coconut creation. They come with gold ribbons, all ready to hang on your tree.

- 10 bars with two flavours:
- Raspberry Coconut
 - Rice White

ART.NO. 17853



10 bars at 8 g each = 80 g
Shelf life: 12 months from production date

CHRISTMAS TREE DECORATION DARK CHOCOLATE

10 Christmas tree ornaments with beautiful and festive designs and made from the finest dark chocolate with a 62% and 70% cacao content for all those chocoholics out there. They come with gold ribbons, all ready to hang on your tree.

- 10 bars with two flavours:
- 62% Dominican Republic
 - 70% Uganda

ART.NO. 17852

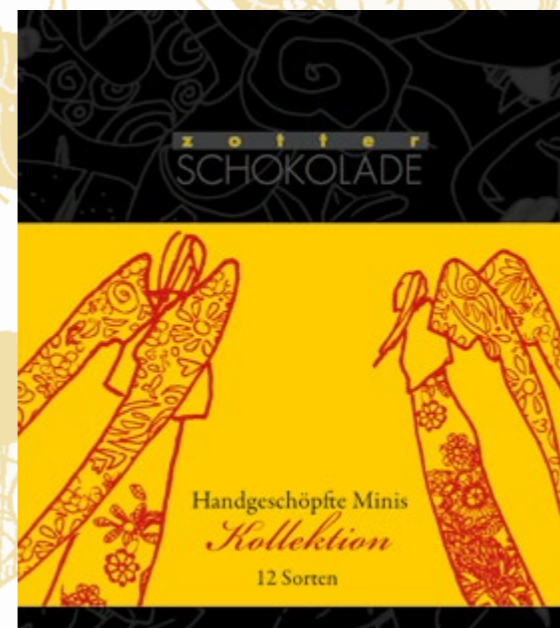
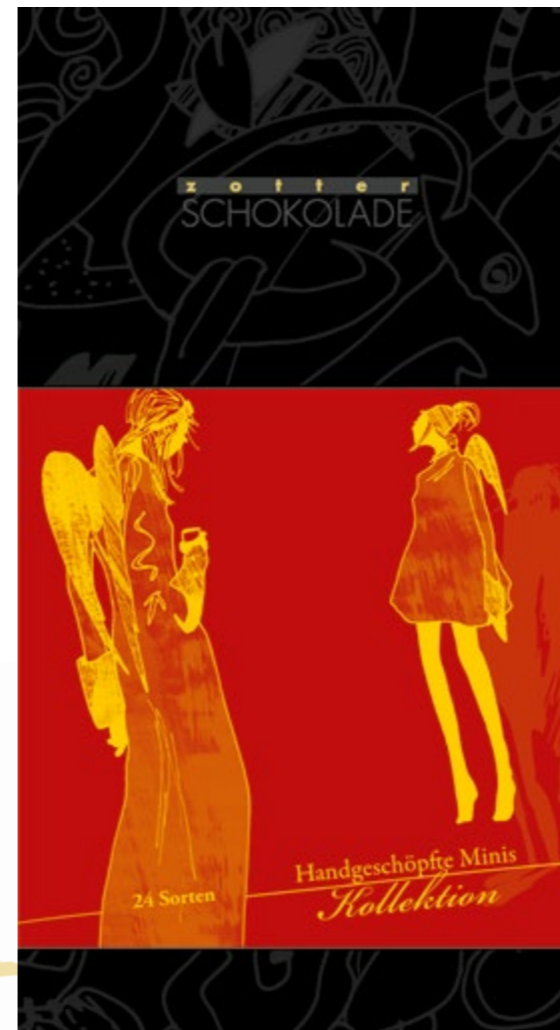


sales unit = 6 packages



Hand-scooped

MINIS COLLECTION



NEW FLAVOURS

HAND-SCOOPED MINIS COLLECTION, 24 FLAVOURS ART.NO. 24957

Hand-scooped little chocolate miracles in 24 flavours in a stylish gift box with a festive sleeve. A Christmas indulgence featuring seductive flavours like berry marzipan, caramelised nuts and of course Marc de Champagne.

- NEW 1. Caramelised Nuts
- 2. Whisky (alc.)
- NEW 3. Choco Bee
- 4. Raspberry Coconut
- 5. Blue Poppyseed
- 6. Orange Liqueur (alc.)
- 7. Hemp Bonbon
- 8. Hazelnut Brittle
- 9. Plum Brandy (alc.)
- 10. ButterCaramel
- NEW 11. Berry Marzipan
- 12. Milk Choco Mousse
- 13. Praline Variation
- 14. Amarena Cherry
- NEW 15. Cherries & Pumpkin Marzipan
- 16. Wild Berries with Vanilla
- 17. Typically Austria
- NEW 18. Marzipan and Almonds
- 19. Chocolate Banana
- 20. Caramel Fudge
- 21. Marc de Champagne (alc.)
- NEW 22. Blueberries + Lemon Cream
- 23. Cognac + Coffee (alc.)
- NEW 24. Honey Nuts

480 g box
Shelf life: 6 months from production date
AVAILABLE ONLY WITH GERMAN PACKAGING

sales unit = 4 pcs.

HAND-SCOOPED MINIS COLLECTION, 12 FLAVOURS ART.NO. 24958

12 Hand-scooped little chocolates in many different seductive flavours like Marc de Champagne, wild berries and butter caramel, wrapped in a sophisticated gift box with a festive sleeve.

- 1. Blue Poppyseed
- 2. ButterCaramel
- 3. Hazelnut Brittle
- 4. Hemp Bonbon
- 5. Plum Brandy (alc.)
- 6. Raspberry and Coconut
- 7. Marc de Champagne (alc.)
- 8. Orange Liqueur (alc.)
- NEW 9. Cherries & Pumpkin Marzipan
- 10. Wild Berries with Vanilla
- NEW 11. Choco Bee
- 12. Whisky (alc.)

240 g box
Shelf life: 6 months from production date
AVAILABLE ONLY WITH GERMAN PACKAGING

sales unit = 5 pcs.

PS After Christmas you can order a standard sleeve for the collection and sell it as a regular gift set.

ALC.

ALC.



GIFT SETS HANDMADE BONBONS & CHOCOLATE



NEW FLAVOURS

BIOFEKT SET – CHRISTMAS 8 + 2 ART.NO. 17262

Gift set featuring 8 organic bonbons and 2 Christmas chocolates, all alcohol-free.

2 Chocolates:

- Candied Almonds (Hand-scooped Chocolate)
- Chimes (Labooko) – 68% Togo & 40% Milk Chocolate Dominican Republic

8 Biofekt bonbons:

- Almond Praline Cube
- Orange Passion Fruit Endorphin
- Blackcurrant Lavender Pot
- Cinnamon Endorphin
- Caramel Endorphin
- 40% Milk Choco
- Red Fruit
- Pistachio

8 bonbons at 6 g each + 2 chocolates at 70 g each = total net weight 188 g
Shelf life: 4 months from production date
AVAILABLE ONLY WITH GERMAN PACKAGING

NEW

BIOFEKT SET – CHRISTMAS 8 + 2 VEGAN ART.NO. 29183

Gift set featuring 8 organic bonbons and 2 Christmas chocolates, all vegan and alcohol-free.

2 Chocolates:

- A Wonderful Christmas Time (Hand-scooped Chocolate) – Cranberry
- Christmas Magic (Labooko) – 72% Belize »Sail Shipped Cacao« & 70% Uganda

8 Biofekt bonbons:

- Hemp Bonbon
- Coconut Marzipan
- Coconut Endorphin
- Hazelnut Pot
- Crispy Rice and Almond
- Red Fruit
- Pecan Praline
- Cranberry Bonbon

Dimensions of the set:
W: 15.5 x H: 14 x D: 3.5 cm
Inlay made from bioplastic

sales unit = 4 pcs.



NEW FLAVOURS

BIOFEKT SET – CHRISTMAS 8 + 4 ART.NO. 17263, contains gluten

Gift set featuring 8 organic bonbons and 4 Christmas chocolates. 8 handmade organic bonbons in festive flavours containing cinnamon, mulled wine, gingerbread and coconut marzipan alongside 4 Christmas chocolates with surprising fillings like Spiced Marzipan on Cinnamon Praline, a white chocolate and a caramel bar, a caramel couverture combined with peanut praline and the finest cashew praline.



4 Chocolates:

- Merry Christmas (Hand-scooped Chocolate)
- Quiet & Unnoticed (Labooko)
- Nut Cracker (Cheery & Nuts)
- Christmas Praliné (Praliné)

8 Biofekt bonbons:

- Cinnamon Endorphin
- Peanut Praline Cube
- Coconut Marzipan
- Mulled Wine Endorphin
- Gingerbread Endorphin
- Vanilla
- Lemon Pot
- Honey Endorphin

8 bonbons at 6 g each + 4 chocolates at 70 g each = total net weight 328 g
Shelf life: 4 months from production date
AVAILABLE ONLY WITH GERMAN PACKAGING

Dimensions of the set:
W: 15.5 x H: 14 x D: 3.5 cm
Inlay made from bioplastic

sales unit = 4 pcs.



ENDORPHINS

CHRISTMAS MOOD IN THE SHAPE OF FILLED BALLS!

Shelf life: 4 months from production date
AVAILABLE ONLY WITH GERMAN PACKAGING

sales unit =
8 packages



ENDORPHINS CHRISTMAS MIX WITH A BUZZ (3 BALLS)

contains gluten

3 handmade organic bonbon balls in a beautiful bonbon carton, sozzled with alcoholic fillings.

Flavours: **Mulled Wine • Gingerbread • Rum**

3 balls at 8 g each = total net weight 24 g

Dimensions of the carton stick: W: 9 x H: 3 x D: 3 cm

ART.NO. 18744

ALC.

ENDORPHINS CHRISTMAS MIX ALCOHOL-FREE (3 BALLS)

3 delicious, organic chocolate balls without alcohol in a fancy stick of chocolates.

Flavours: **Cinnamon • Orange Passion Fruit • Honey**

3 balls at 8 g each = total net weight 24 g

Dimensions of the carton stick: W: 9 x H: 3 x D: 3 cm

ART.NO. 17415



ENDORPHINS CHRISTMAS MIX ALCOHOL-FREE (6 BALLS)

6 handmade, festively filled chocolate balls in a pretty carton stick as alcohol-free mix in the flavours: **Cinnamon • Orange Passion Fruit • Honey • Pumpkin Seed • Cappuccino • Coconut**

6 balls at 8 g each = total net weight 48 g

Dimensions of the stick: W: 16.3 cm x H: 3 cm x D: 3 cm

Dimensions of the display: W: 11.2 cm x H: 16.6 cm x D: 20 cm

ART.NO. 17422

INCLUDING DISPLAY



ENDORPHINS CHRISTMAS MIX WITH A BUZZ (6 BALLS)

contains gluten

6 fine, handmade filled chocolate balls with an alcohol filling in a pretty carton stick. Flavours: **Mulled Wine • Gingerbread • Rum • Cinnamon • Orange Passion Fruit • Honey**

6 balls at 8 g each = total net weight 48 g

Dimensions of the stick: W: 16.3 cm x H: 3 cm x D: 3 cm

Dimensions of the display: W: 11.2 cm x H: 16.6 cm x D: 20 cm

ART.NO. 17416

INCLUDING DISPLAY

ALC.





BIOFEKT POP

Fresh, handmade organic bonbons
rock the festive season with stunning flavour and design



NEW FLAVOURS

ALC.

BIOFEKT POP HAPPY CHRISTMAS

ART.NO. 17414, contains gluten

8 handmade and hand-decorated organic bonbons with alcoholic fillings like mulled wine, gingerbread and sweet flavours will make your festive season shine. They're wrapped in a Christmassy bonbon box with a seasonal design.

Bonbon flavours

- Mulled Wine Endorphin
- Peanut Praline Cube
- Cinnamon Endorphin
- Vanilla
- Lemon Pot
- Honey Endorphin
- Coconut Marzipan
- Gingerbread Endorphin

8 bonbons at 6 g each = total net weight 48 g
 Dimensions of the chocolate box: W: 12.5 x H: 12.5 x D: 3 cm
 Shelf life: 4 months from production date
 Inlay made from bioplastic
 AVAILABLE ONLY WITH GERMAN PACKAGING

sales unit
= 4 pcs.

BIOFEKT POP STAR HOURS

ART.NO. 17267

8 handmade, alcohol-free organic bonbons, which will enhance your festive season with caramel, almond praline and red fruit. Wrapped in a Christmassy bonbon box with a pretty star design.

Bonbon flavours

- Caramel Endorphin
- Blackcurrant Lavender Pot
- Orange Passion Fruit Endorphin
- Pistachio
- Almond Praline Cube
- Red Fruit Endorphin
- 40% Milk Choco
- Cinnamon Endorphin

CHOCOLATE SETS

The right present for each and every taste. In every gift box you will find flavour, quality, variety, sustainability and a great design – whether it's big or small, this always fits.



FLAVOUR VARIETY IS THE MOST THOUGHTFUL OF GIFTS

1 **ZOTTER 02 HAPPY HOLIDAYS** ART.NO. 22121
 2 Christmas chocolates with seductive red wine and marzipan filling and two different dark single origin chocolates, wrapped in a Christmassy gift box. Completely vegan.
 Flavours: Jingle Bells Rock (Hand-scooped), Christmas Magic (Labooko)

NEW FLAVOURS



2 **ZOTTER 02 SWEET CHRISTMAS** ART.NO. 22105
 2 completely alcohol-free Christmas chocolates that will excite you with a spiced marzipan on a cinnamon praline and a caramel couverture combined with peanut praline – all wrapped in a festive gift box. Flavours: Merry Christmas (Hand-scooped), Nut Cracker (Cheery & Nuts)

NEW FLAVOURS

140 g set
 Shelf life: 6 months from production date
 The gift boxes are also available without chocolates.
 AVAILABLE ONLY WITH GERMAN PACKAGING

sales unit
= 4 pcs.



CHOCOLATE SETS



3



6



4



5

- 3 ZOTTER 02 CHRISTMAS** **ART.NO. 22010**
2 festive chocolates, packaged in a gift box with a transparent sleeve. Flavours: Holy Night – Burning Bright (Hand-scooped), Nut Cracker (Cheery & Nuts)
- 4 ZOTTER 05 CHRISTMAS** **ART.NO. 22020**
5 festive chocolates, packaged in a gift box with a transparent sleeve. Flavours: Heavenly Delight, Marzipan Angel, Gingerbread & Fruit (all Hand-scooped), Quiet & Unnoticed, Chimes (both Labooko)
- 5 LABOOKO 05 MERRY CHRISTMAS** **ART.NO. 20593**
5 Christmas Labookos, wrapped in a gift box with a transparent protective sleeve. Flavours: Quiet & Unnoticed, Chimes, Miracles and Fairy Tales, Christmas Magic and Pieces of Pure Joy
- 6 ZOTTER 05 CHRISTMAS VARIATION** **ART.NO. 29182**
5 festive chocolates, wrapped in a gift box with a transparent protective sleeve. Flavours: Christmas Magic (Hand-scooped), Crispy Angel (Choco with Nuts), Chimes (Labooko), Christmas Praliné (Praliné) and Nut Cracker (Cheery & Nuts)

NEW FLAVOURS

NEW FLAVOURS

contains gluten

NEW FLAVOURS

NEW FLAVOURS

Flavours as shown.
 Shelf life: No. 5: 14 months from production date,
 all the others: 6 months from production date
 The gift boxes are also available without chocolates.
 AVAILABLE ONLY WITH GERMAN PACKAGING

sales unit = 4 pcs.



NEW YEAR



NEW

HAND-SCOOPED CHOCOLATE MINIS

LUCKY CHARM ART.NO. 18797
Milk Choco Mousse

A veritable messenger of joy bringing a filling of soft, wonderfully tender-melting mousse made from a deliciously sweet milk chocolate with 40% cacao content. It dissolves like fine butter and is covered in a dark milk chocolate boasting 60% cacao power as an exciting and surprising contrast.

Box dispenser with 25 chocolate bars
Individual bars are 20 g each
Shelf life: 6 months from production date



sales unit =
25 pcs./box

HAND-SCOOPED CHOCOLATES



LUCKY CHARM
Milk Choco Mousse

A veritable messenger of joy bringing a filling of soft, wonderfully tender-melting mousse made from a deliciously sweet milk chocolate with 40% cacao content. It dissolves like fine butter and is covered in a dark milk chocolate boasting 60% cacao power as an exciting and surprising contrast.

ART.NO. 16555



HAPPY NEW YEAR
Marc de Champagne

A Fleury Marc de Champagne, organic and bearing a Demeter certification, enveloped by a dark chocolate ganache, it will get you into the festive spirit. It comes covered in a dark, 70% chocolate.

ART.NO. 16298

ALC.

sales unit
= 10 pcs.

sales unit
= 5 pcs.

70 g bar
Shelf life: 6 months from production date

BIOFEKT POP

NEW FLAVOURS

HAPPY NEW YEAR
ART.NO. 17268

New Year's chocolate box with 8 handmade, organic bonbons of the flavours:

- Blood Orange Endorphin
- Currant
- Gin Endorphin
- Zotter Coffee
- Rose Marzipan
- Raspberry Endorphin
- Limoncello Liqueur
- Almond Endorphin

8 bonbons at 6 g each = total net weight 48 g
Dimensions of the chocolate box:
W: 12.5 x H: 12.5 x D: 3 cm
Shelf life: 4 months from production date
Inlay made from bioplastic

sales unit
= 4 pcs.





NEW

MI-XING DELUXE

**4 NEW YEAR'S MINI DELUXE BARS
ART.NO. 45072**

Four different small chocolate bars with a four-leaf clover.
1. One milk chocolate filled with a fine vanilla mousse, decorated with roasted pumpkin seeds in a pink raspberry couverture and crunchy cacao nibs in white chocolate.
2. One white chocolate decorated with green tea chocolate hearts in the shape of a four-leaf clover and some crispy blueberry chocolate fruit bits.
3. One fruity apricot bar, its stunning colour derived entirely from fruit, decorated with green tea chocolate hearts in the shape of a four-leaf clover and some crispy blueberry chocolate fruit bits.
4. One almond chocolate filled with a fruity raspberry mousse, decorated with roasted pumpkin seeds in a pink raspberry couverture and some crunchy cacao nibs in white chocolate.

NEW

MI-XING DELUXE

**NEW YEAR'S CHOCO DELUXE
ART.NO. 45073**

A dark fine flavour chocolate with a festive Marc de Champagne chocolate mousse filling and featuring 2023-lettering made from white coconut couverture. It's decorated with crispy passion fruit chocolate fruit bits, a caramelised almond, roasted pumpkin seeds in a pink raspberry couverture and a green tea chocolate flake hand-designed in the shape of a white four-leaf clover made from coconut couverture.

At least 100 g bar
Shelf life: 4 months from production date

sales unit = 5 pcs.

ALC.

NEW

MI-XING HEART DELUXE

NEW YEAR'S HEART DELUXE

A white chocolate heart filled with a fruity raspberry mousse and decorated with hand-written 2023 New Year's lettering in a pink raspberry couverture – its stunning colour derived entirely naturally from berries. It's decorated with a four-leaf clover made from green tea chocolate hearts, crispy blueberry chocolate fruit bits, coconut flakes and a roasted pumpkin seed in a pink raspberry couverture and in dark chocolate.

At least 100 g bar
Shelf life: 4 months from production date
AVAILABLE ONLY WITH GERMAN PACKAGING

ART.NO. 45071

sales unit = 5 pcs.

LABOOKO

**PIECES OF PURE JOY
Coconut & 70% Dark Chocolate
ART.NO. 20154**

VEGAN

Exotic & dark: 2 very different bars in one package: one a cheeky white coconut bar, seducing you with desiccated coconut, coconut milk and a wonderfully exotic flavour! The other a dark chocolate with a 70% cacao content, made from fine flavour cacao, which we transform, bean-to-bar, into a sublime high-percentage chocolate. Two delicious bits of joy, entirely vegan.

2 x 35 g bar
Shelf life: 14 months from production date
AVAILABLE ONLY WITH GERMAN PACKAGING

sales unit = 10 pcs.

sales unit = 5 pcs.



z o t t e r
CHOCOLATE

z o t t e r Schokolade GmbH

Bergl 56 • 8333 Riegersburg • Austria

Phone: +43/3152/55 54 • Fax: +43/3152/55 54 3222

schokolade@zotter.at • www.zotter.at

Commercial register no.: Regional civil court ZRS Graz

VAT no.: ATU 53816900

Chocolate Theatre & Edible Zoo

July - September: Mon - Sat: 9 am - 8 pm

October - June: Mon - Sat: 9 am - 7 pm

Closed on Sundays and public holidays.

**WE'RE LOOKING FORWARD
TO YOUR ORDERS**

