

z o t t e r



CHRISTMAS
CATALOGUE 2020

Nono Noe
overexte
ameri Pott
eri stori
ma



100% ORGANIC + FAIR + BEAN-TO-BAR

Our entire business is Fair Trade verified. We are a member of WFTO – the World Fair Trade Organization, which is the umbrella organization for global fair trade. The WFTO monitors business compliance with the 10 principles of fair trade like transparency, respect for the environment, the payment of fair prices and no use of child labour among others. For more on this, go to www.zotter.at/fair-trade and www.wfto.com

100% BEAN-TO-BAR: Zotter chocolates are produced starting from the bean in our bean-to-bar chocolate factory.

All the ingredients for the chocolate come from ORGANIC cultivation. The number of the organic board of control serves as identifying information. ORGANIC control number: AT-BIO-402

THE PROTECTION OF THE ENVIRONMENT

is a very important aspect of our corporate philosophy.

Our environmental protection and our environmental measures are ISO 14001 and EMAS certified. EMAS-certified companies are recorded in a Europe-wide register and are regularly checked and monitored on a national level by environmental experts approved by the environment department. You can find our environmental declaration in German online at www.zotter.at

ORGANIC PLASTIC

If possible, we try to use organic plastic as much as possible: it is derived from renewable materials, is biodegradable and even compostable according to European Standard 13432.

DESIGN

Designed by Andreas H. Gratze

We use certified paper without glossy coating and environmentally friendly colours for the packaging.

ORGANIC SOY LECITHIN

Zotter uses lecithin exclusively from controlled organic cultivation. Organic soy lecithin is guaranteed free from genetic engineering and protects the environment because no rainforests are cleared for its cultivation.

STORAGE ADVICE

We do not use any artificial stabilizers or preservatives. For this reason, our goods are more temperature sensitive than other high-quality chocolate products.

Ideally you should store Zotter chocolates in a cool and dry place where the temperature is between 16 °C and 18 °C.

You should not put the chocolates into a fridge. This way they would lose their substance because the humidity would let the sugar crystallise. If the temperature is too high, though, it will result in the emission of cocoa butter which will settle as a white film on the surface of the chocolate. The loss of the cocoa butter will dry out the chocolate – hence, the flavour of the chocolate will suffer.

CONTENT

ADVENT CALENDARS	PAGE 04
SANTA CLAUS + KRAMPUS	PAGE 11
HAND-SCOOPED CHOCOLATES	PAGE 13
HAND-SCOOPED MINIS	PAGE 15
DRINKING CHOCOLATE	PAGE 15
HAND-SCOOPED MINIS COLLECTION	PAGE 16
CHOCO LOLLY	PAGE 17
CLASSIC CHOCOLATE	PAGE 17
LABOOKO	PAGE 18
MITZI BLUE	PAGE 19
CHOCOLATE FOR SCHOOL & SAIL SHIPPED CACAO	PAGE 20
SQUARING THE CIRCLE	PAGE 21
CREMA	PAGE 21
MIXING STARS + HEARTS	PAGE 21
MIXING MINIS	PAGE 24
CHRISTMAS TREE DECORATION	PAGE 25
BIOFEKT + CHOCOLATES	PAGE 26
BIOFEKT + ENDORPHINS	PAGE 27
CHOCOLATE GIFT SETS	PAGE 28
NEW YEAR	PAGE 29



ZOTTER'S NEW CHRISTMAS COLLECTION

HANDMADE, CREATIVE AND SUSTAINABLE

The Christmas season is almost upon us and 13 irresistible Hand-scooped Christmas chocolates are waiting for you, including the popular "Heavenly Delight", which sports a brand-new design. "For the Best Employee in the World!" also has a new look as well as a sublime sweet chestnut and cranberry centre. The Mulled Wine, Punch and Gingerbread give us all the Christmas feels, and our two small, Hand-scooped Christmas minis, "For Sweet Angels", filled with white chocolate, and "Sweet Christmas", filled with gingerbread, are a delight for big and small.

A new "Christmas Miracle" chocolate from our "Squaring of the Circle" range features a stunningly beautiful design and a Christmassy coconut and caramel flavour sweetened with coconut sugar, an innovative sugar alternative, which sounds amazing and tastes even better.

Another newbie in our Christmas range is the "Cinnamon Praline" Crema, a smooth praline spread, if you like your morning slice of bread with some festive cinnamon notes.



We will also make the wait for Christmas a lot sweeter with our seven heavenly Advent calendars filled with everything your heart desires. There's a big wall calendar full of Hand-scooped and pure chocolates and there are small, filled Nashido bars that will get you in the mood with red wine, Marc de Champagne and several new praline flavours. We can also offer drinking chocolates which turn into delicious hot beverages, organic bonbons in 24 seductive flavours and of course a large, unique, vegan Advent wall calendar, which will sweeten the festive season with exciting plant-based milk chocolate alternatives, a colourful raspberry coconut bar, high-percentage dark chocolate classics and a brand-new Christmas tree design.



Our Christmas Labookos spread their magic with nutty pralines, fine flavour chocolates as well as our new eco-cacao, transported from Belize via sailboat, and our environmentally protective Zorzal cacao, grown and harvested in the middle of the Zorzal bird sanctuary in the Dominican Republic.

Naturally we have also designed many beautiful chocolate stars, chocolate hearts and Christmas minis and decorated them with festive themes. There are small, filled and pure chocolate bars, very pretty and sweet, available as a hanging Christmas decoration, which can be eaten right off the tree. And Santa Claus and Krampus will find many gifts for angels and rascals.

All gift sets and bonbon boxes are filled with new flavours, and our New Year's chocolates are decorated with four-leaf clovers and 2021 lettering.

All our products are ORGANIC, FAIR and BEAN-TO-BAR. They have been produced and beautifully wrapped with love at our chocolate factory and feature the intricate and festive designs of the brilliant Andreas H. Gratz, who turns each chocolate bar and Advent calendar into a sensual, stylish gift.

Christmas Orders in December

Nothing is more annoying than running out of merchandise in the run-up to Christmas. We will produce chocolates for you up to and including December, and you will be able to order fresh products until shortly before Christmas Eve Day. We will offer you maximum flexibility so you will always have enough of our chocolates on hand to make your customers happy.

We wish you a delicious Christmas and festive season
Josef and Julia Zotter

ADVENT CALENDAR



HAND-SCOOPED ADVENT CALENDAR (alc.), contains gluten

A stylish, large-format wall Advent calendar, filled with 24 different Hand-scooped Mini Chocolates in seductive flavours like different praline variations, butter caramel, Marc de Champagne, orange liqueur and gingerbread. This stunning chocolate range in organic and fair trade quality and featuring an absolutely beautiful design will make your festive season even sweeter.

The calendar inlay is made from organic plastic, which is created with renewable materials only and thus compostable.

24 Hand-scooped Mini Chocolates at 20g each = total net weight 480g
Shelf life: 6 months from production date
Calendar dimensions: W: 48 cm x H: 33 cm x D: 1.8 cm

ONLY AVAILABLE WITH GERMAN COVER

ART.NO. 17919



Varieties

- | | | |
|---------------------------------|-------------------------------|---|
| 1. Thousand Layer Praline | 9. Plum Brandy (alc.) | 17. Typically Austria |
| 2. Whisky (alc.) | 10. Butter Caramel | 18. Hazelnut Marzipan (alc.) |
| 3. White Chocolate with Brittle | 11. Yuzu Citrus | 19. Chocolate Banane |
| 4. Raspberry Coconut | 12. Milk Cream | 20. Caramel Fudge |
| 5. Blue Poppyseed | 13. Praline Variation | 21. Marc de Champagne (alc.) |
| 6. Orange Liqueur (alc.) | 14. Amarena Cherry | 22. Currant 'n' Chili |
| 7. Hemp Bonbon | 15. Amaretto Marzipan (alc.) | 23. Cognac + Coffee (alc.) |
| 8. Nut Delight | 16. Wild Berries with Vanilla | 24. Sweet Christmas – Gingerbread (alc.), contains gluten |



MITZI BLUE ADVENT CALENDAR

These flavours + design are perfect for children!

A large-format chocolate calendar filled with many colourful chocolate discs and a magically beautiful festive design. Behind every door, there's a small chocolate disc in thirteen different flavours featuring the finest cashew, hazelnut and almond pralines, white chocolate, milk chocolate as well as colourful strawberry and raspberry fruit bars - their stunning, bright hues derived entirely from natural berries. Behind door number 24 awaits a big, snowy Mitzi Blue bar "Softly Falls the Snow" with a mix of coconut and white chocolate.

All our chocolate discs are of course organic and fair trade and made with love at our in-house chocolate factory!

ONLY AVAILABLE WITH GERMAN COVER

ART.NO. 24050

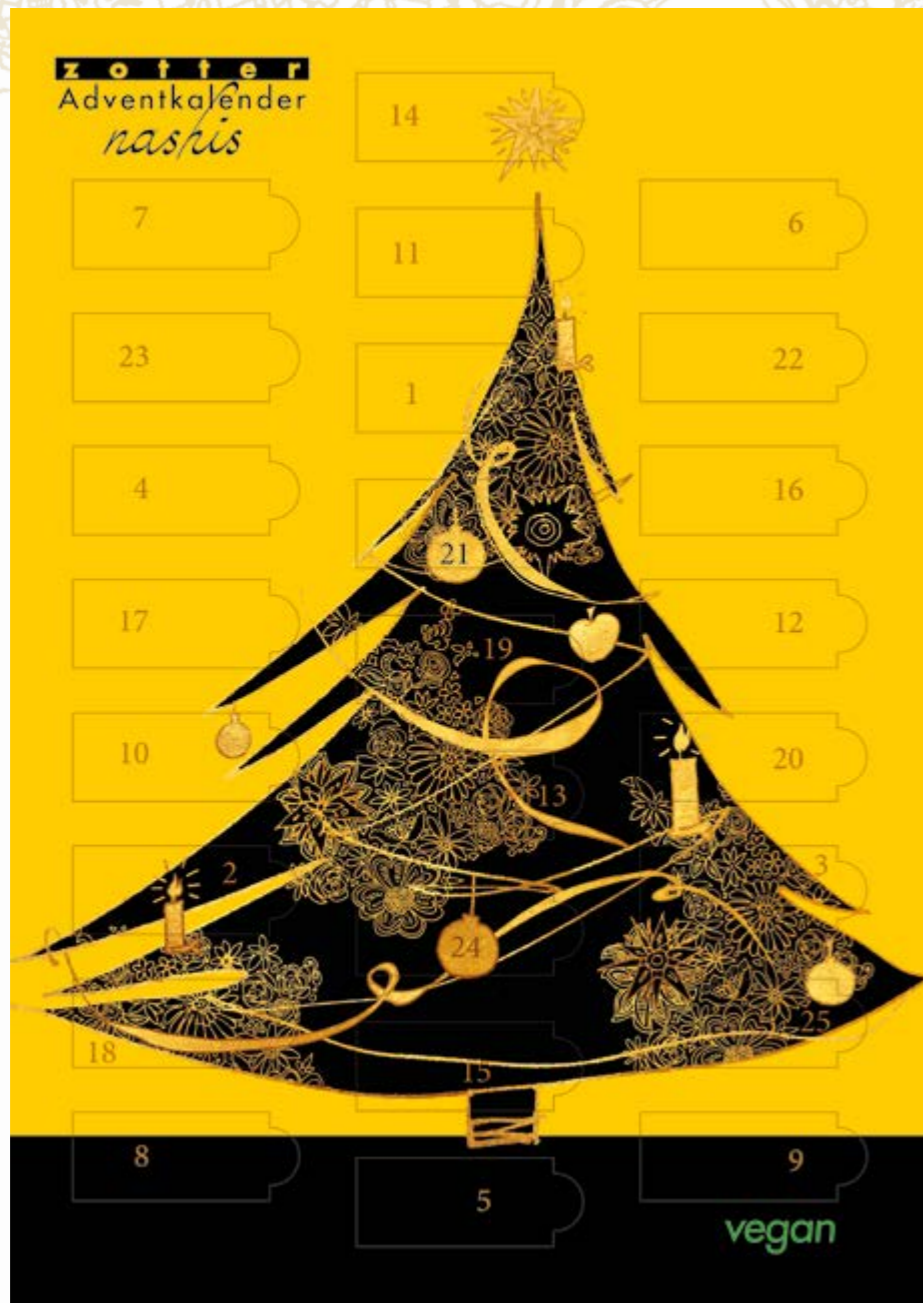


Varieties

- 2 x Fruit Bar
- 2 x White Chocolate with Cinnamon
- 2 x Hazelnut Praline with Hazelnut Brittle
- 2 x White Chocolate
- 2 x Cashew Praline
- 2 x Raspberry Bar
- 2 x Caramel Bar
- 2 x Dark Milk Chocolate
- 2 x Milk Chocolate
- 2 x Blackcurrant Bar
- 2 x Almond Praline with Orange Blossom Oil
- 1 x Strawberry Bar
- 1 x "Softly Falls the Snow"
(Coconut Bar + Coconut Flakes + Cinnamon)

The calendar inlay is made from organic plastic, which is created with renewable materials only and thus compostable.

23 colourful mini Mitzis at 10g each + 1 Mitzi Blue at 65g = 295g
Shelf life: 14 months from production date
Calendar dimensions: H: 39 cm x W: 39 cm x D: 1.8 cm



NEW DESIGN

NASHIS ADVENT CALENDAR "VEGAN"

Our vegan Nashis Advent calendar is filled with 24 pure mini chocolates and has a beautiful fir tree design. It contains 13 different flavours, exciting purely plant-based chocolate alternatives, colourful fruit bars, high-percentage dark chocolate classics as well as 100% cacao content chocolate and even a vegan gingerbread chocolate. As a reward for busy Father Christmas or just to calm strained nerves, there's also a small extra 25th Nashido bar filled with refreshing peppermint mousse.

ONLY AVAILABLE WITH GERMAN COVER

ART.NO. 17850



25. Nashido Peppermint
As a reward for busy Father Christmas, there's a little Nashido bar, filled with peppermint mousse.

The calendar inlay is made from organic plastic, which is created with renewable materials only and thus compostable.

24 pure mini chocolates at 7g each + 1 filled Nashido bar at 8.5g = total net weight 176.5g

Shelf life: 6 months from production date

Calendar dimensions: W: 29.5 cm x H: 42 cm x D: 1.6 cm

Varieties

- 2 x Soy
- 2 x Dark Chocolate 90%
- 2 x Rice
- 2 x Dark Chocolate 65%
- 2 x Coconut
- 2 x Dark Chocolate 80%
- 2 x Dark Chocolate 60%
- 2 x Rice White
- 2 x Raspberry Coconut
- 2 x Soy White
- 2 x Dark Chocolate 70%
- 1 x Dark Chocolate 100%
- 1 x Gingerbread



NASHIS ADVENT CALENDAR

A large-format Advent calendar filled with 24 small, pure chocolates in as many different flavours featuring dark chocolate, milk chocolate, fruity and colourful chocolates made from strawberry, raspberry and banana as well as festive classics like gingerbread and caramel. There is a 25th chocolate bar as a reward for busy-bee Santa Claus. This little Nashido delicacy is filled with the most sublime caramel praline.

The calendar inlay is made from organic plastic, which is created with renewable materials only and thus compostable.

ONLY AVAILABLE WITH GERMAN COVER

ART.NO. 17917



25. Nashido Caramel Praline
As a reward for busy Father Christmas, there's a little Nashido bar, filled with caramel praline.

Varieties

- | | |
|--------------------------------|---------------------------------|
| 1. Mountain Milk Chocolate 40% | 13. Dark Chocolate 100% |
| 2. Rice | 14. White Chocolate |
| 3. Blackcurrant | 15. Mountain Milk Chocolate 35% |
| 4. Mountain Milk Chocolate 50% | 16. Rice White |
| 5. Dark Chocolate 80% | 17. Dark Chocolate 60% |
| 6. Strawberry | 18. Coconut |
| 7. Soy White | 19. Raspberry |
| 8. Dark Chocolate 90% | 20. Dark Milk Chocolate 60% |
| 9. Banana | 21. Soy |
| 10. Raspberry Coconut | 22. Mango Lassi |
| 11. Caramel | 23. Dark Chocolate 70% |
| 12. Dark Chocolate 65% | 24. Gingerbread |

24 pure mini chocolates at 7 g each
+ 1 filled Nashido bar at 8.5 g
= total net weight 176.5 g

Shelf life: 6 months from production date

Calendar dimensions:
W: 29.5 cm x H: 42 cm x D: 1.6 cm



NASHIDO ADVENT CALENDAR (alc.)

A large wall calendar containing fine, thin mini chocolate bars with delicious, creamy fillings in seductive flavours like Red Wine, Grappa, Marc de Champagne, classic Peppermint, fruity Redcurrant and Raspberry and tender-melting praline. The slim Nashido shape is elegant and a veritable celebration for the palate with its delicious flavour and seductively quick melt. There is a surprise 25th chocolate bar in there, a pure gingerbread chocolate, to be enjoyed on Christmas Day or as a snack shared with friends along the way to Christmas Eve.

The calendar inlay is made with bioplastics, which are derived from renewable raw materials and are entirely biodegradable and compostable.

ONLY AVAILABLE WITH GERMAN COVER

ART.NO. 17572



Varieties

- 3 x Raspberry
- 2 x Red Wine (alc.)
- 2 x Redcurrant
- 2 x Marc de Champagne (alc.)
- 3 x Peppermint
- 3 x Caramel Praline
- 3 x Whisky (alc.)
- 2 x Grappa (alc.)
- NEW 2 x Peanut
- NEW 2 x Hazelnut

24 filled mini chocolates at 8.5 g +
 1 pure mini chocolate at 7 g = total net weight 211 g
 Shelf life: 6 months from production date
 Calendar dimensions: W: 29.5 cm x H: 42 cm x D: 1.6 cm



25. There is a surprise 25th chocolate bar in there, a pure gingerbread chocolate.



The outer sleeve serves as a protective cover

DRINKING CHOCOLATE ADVENT CALENDAR

A calendar with just drinking chocolates containing 24 of them to enjoy hot in festive mugs on a cosy evening with friends. 19 different flavours from fragrant honey and cinnamon to the drink of the gods featuring divinely smelling tonka beans, classics like Almond Praline, Bitter Classic and Caffè Latte to the spicy Bird's Eye Chilli and aromatic Indian Chai.

A stunning Advent calendar with two wings and an absolutely exquisite design – an eye-catcher wherever you decide to place it.

The calendar inlay is made from organic plastic, which is created with renewable materials only and thus compostable.

24 drinking chocolates at 22 g each = total net weight 528 g
Shelf life: 14 months from production date
Calendar dimensions: W: 17 cm x H: 37 cm x D: 3.5 cm

ONLY AVAILABLE WITH GERMAN COVER

ART.NO. 17920



Varieties

1. Almond Praline
2. Chilli Bird's Eye
3. Green Tea
4. Cinnamon Banana
5. Caramel
6. Nut Praline
7. Ginger Coconut
8. Honey Cinnamon
9. Xocitto 100%
10. White Vanilla
11. Hemp Drink
12. Bitter Classic
13. Milk Cocoa
14. Indian Chai
15. Caffè Latte
16. Coffee Cardamom
17. Nut Praline
18. Cashew Caramel
19. Winter Magic
20. Nectar of the Gods
21. White Vanilla
22. Almond Praline
23. Caramel
24. Honey Cinnamon



EXTREMELY FANCY & UNBELIEVABLY DELICIOUS



BIOFEKT ADVENT CALENDAR (ORGANIC BONBONS) (alc.) contains gluten

A golden, three-dimensional star, decorated with many small presents containing 24 handmade, natural, deliciously organic bonbons created without any artificial flavouring, which will sweeten the wait until Christmas is here. There are 24 different flavours, some boozy with mulled wine, rum and Marc de Champagne, some fruity with wild berries, oranges and apricot, some seductively nutty with almonds, hazelnuts and pumpkin seeds. Everything is, of course, organic and fair traded – something practically unheard of in the bonbon department.

The Biofekt Advent Calendar is packed in pieces and can be assembled easily at home. Whoever puts it together should open the present with the big 0 on it and enjoy the very first bonbon.

ART.NO. 17389



Varieties

- | | |
|-----------------------------------|---|
| 0. Vanilla | 12. Hazelnut Pot |
| 1. Apricot (alc.) | 13. Orange Passion Fruit Endorphin |
| 2. Coffee Endorphin (alc.) | 14. Limoncello Liqueur (alc.) |
| 3. Cashew Praline | 15. Rosé Wine Endorphin (alc.) |
| 4. Rice Orange | 16. Blackcurrant Lavender Potty |
| 5. Pumpkin Seed Endorphin | 17. Marc de Champagne Endorphin (alc.) |
| 6. Peanut Praline | 18. Wild Berries |
| 7. Raspberry Endorphin (alc.) | 19. Mulled Wine Endorphin (alc.) |
| 8. Almond Pot | 20. Gingerbread Endorphin (alc.), contains gluten |
| 9. Caramel Praline | 21. Hazelnut Praline Light |
| 10. Zotter Coffee | 22. Almond Endorphin (alc.) |
| 11. Potato Vodka Endorphin (alc.) | 23. Coconut and Rum (alc.) |
| | 24. Almond Praline |

25 bonbons at 6 g = total net weight 150 g
Shelf life: 4 months from production date
Calendar dimensions: W: 37 cm x H: 36 cm x D: 38 cm

Enjoy the first chocolate as a reward for the assembly of the star.

SANTA CLAUS + KRAMPUS



HAND-SCOOPED CHOCOLATE

FOR GOOD ONES Honey Crunch

ART.NO. 16009

With the legendary 1994 St. Nicholas design. Chocolate for people with a clean record. Tasty honey petals hum and crackle in a white chocolate cream enhanced with almond praline. Coated with white chocolate.

FOR RASCALS Nut Delight

ART.NO. 16015

With the iconic 1994 Krampus design. A nut aroma crescendo. A tender-melting hazelnut nougat made from many dark roasted hazelnuts and pure cocoa butter, enhanced with bits of roasted cashews, almonds and hazelnuts and a hint of cinnamon and Bourbon vanilla. It's covered in a thin milk chocolate layer and enveloped in a dark, high-percentage milk chocolate with a full-bodied 60% cacao content.

DEVIL'S PLUMS Plum Brandy (alc.)

ART.NO. 16218

Rustic Devil Chocolate filled with a plum brandy which has been stored in a barrel for a long time and which heats up this dark chocolate. Nibbling on this chocolate will result in a pleasantly warm feeling which will help you to endure the colder days.

CLASSIC

NUT KRAMPUS Hazelnut Kiss

ART.NO. 18566

A milk chocolate bar kissed by a tender hazelnut praline created with freshly roasted hazelnuts.

ONLY AVAILABLE WITH GERMAN PACKAGING

LABOOKO

DEVIL + SANTA CLAUS Raspberry & 35% Milk Chocolate Panama ART.NO. 20159

Chocolates from the bag of benevolent Santa Claus. 2 different bars in one package: one a fruity-red raspberry chocolate - its sublime colour and flavour derived from nothing but fruit. The other one a milk chocolate made from an extraordinary cacao variety, cultivated by indigenous people in the rain forests of Panama.

ONLY AVAILABLE WITH GERMAN PACKAGING

CHOCO LOLLY

DEVIL'S ALMONDS Almond Chocolate

ART.NO. 25409

The almond chocolate lolly tastes devilishly good. Zotter whips up an almond praline out of sweet Spanish almonds which is combined with white chocolate and vanilla and fits perfectly into every Christmas stocking.

ONLY AVAILABLE WITH GERMAN PACKAGING

BIOFEKT POP

NEW VARIETIES

SANTA CLAUS + DEVIL (alc.)

Santa Claus chocolate box with 8 handmade, fresh chocolates of the following varieties:

- Cinnamon Endorphin
- Crispy Rice and Almonds
- Sour Cherry Endorphin
- Hazelnut Praline Cube
- Rum Endorphin
- Salted Caramel Pot
- Blackcurrant Endorphin
- Zotter Coffee

8 bonbons, 6 g each = 48 g
The inlay is made out of organic plastic.
Size: B: 12.5 cm x H: 12.5 cm x T: 3 cm

ONLY AVAILABLE WITH GERMAN
PACKAGING

ART.NO. 17266

MERRY CHRISTMAS



AHS

HAND-SCOOPED CHRISTMAS CHOCOLATES



70 g bar
Shelf life: 5 months from production date

HEAVENLY DELIGHT ButterCaramel

A sweet temptation consisting of delicately melting caramel, which is stirred with butter, applied on a layer of praline. Crunchy caramel crisps are bustling in between these layers which are surrounded by milk chocolate with 50% of cacao content.

ART.NO. 16021

NEW DESIGN



FOR THE BEST EMPLOYEE IN THE WORLD!

Chestnut + Cranberry

A sweet thank you for employees who give their best every day: a fruity-sweet cranberry filling with little cranberry bits on a seductive sweet walnut praline. It's covered with a homemade chestnut couverture mixed with milk chocolate. Delicate & fruity!

ART.NO. 16458

NEW VARIETY



FROM THE CHRISTMAS WORKSHOP

French White Nougat

French white nougat hailing from Montélimar is a veritable delicacy and extremely difficult to create. We dared to try, produced an otherworldly delicious and sweet white cloud and dunked some chopped pistachios and hazelnuts in it. We added a layer of homemade almond praline and covered the bar in an elegant milk chocolate coat with a confident 60% cacao content.

ART.NO. 16288



MERRY CHRISTMAS

Spiced Marzipan on Cinnamon Praline (alc.)

This milk chocolate perfectly sums up the smell and taste of the Christmas season. Filled with a layer of spicy marzipan onto which homemade hazelnut praline blended with aromatic and spicy cinnamon is spread.

ART.NO. 16290



FOR ANGELS PralineVariation

Alternating layers of light almond praline and dark hazelnut praline, refined with crunchy hazelnut brittle. Immersed in milk chocolate with 60% of cacao content.

ART.NO. 16011





HO HO HO ...

Honey Nuts

Nutty marzipan magic: a heavenly soft almond marzipan layer, sweetened with honey, on a second layer made from tender-melting almond praline enhanced with a bit of white chocolate and homemade honey and nut brittle. For this brittle, we bathe bits of caramelised almonds and hazelnuts in honey before throwing them in the praline. All of this is covered in milk chocolate with a 50% cacao content.

ART.NO. 16524



HOLY NIGHT – BURNING BRIGHT

Roasted Almonds

Fresh from your local Christmas market: a homemade almond praline using roasted and caramelised chopped almonds in dark milk chocolate with a 50% cacao content, this delicacy brings back all manner of sweet, delicious and nutty taste memories from our childhood.

ART.NO. 16334



JINGLE BELLS ROCK

Marzipan + Red Wine (alc.)

A festive red wine ganache made from vegan soy chocolate with a 40% cacao content, a bit of dark chocolate, red wine from Schönberger vineyard as well as some cloves and a seductive almond marzipan layer. Enveloped in dark chocolate with a 70% cacao content. Completely vegan!



ART.NO. 16386



MARZIPAN ANGEL

Almond Praline and Marzipan

A milk chocolate with a 50% cacao content, filled with a tender-melting almond praline made with freshly roasted almonds, enhanced with a hint of white chocolate and topped with a second layer of almond marzipan.

ART.NO. 16291

**GREETINGS FROM SANTA
Marc de Champagne (alc.)**

A Fleury Marc de Champagne, organic and bearing a Demeter certification, enveloped by a dark chocolate ganache, it will get you into the festive spirit. It comes covered in a dark, 70% chocolate.

ART.NO. 16427



**HAPPY HOLIDAYS
Hazelnut Brittle**



A tender-melting hazelnut praline made from many dark-roasted hazelnuts and pure cocoa butter, enhanced with a crunchy hazelnut brittle, Bourbon vanilla and cinnamon. Enveloped in dark chocolate with a 70% cacao content and huge character. Completely vegan!

ART.NO. 16463



**CHRISTMAS MAGIC
Honey Crunch**

White Christmas: Austrian honey hums and tasty honey-rice crisps crackle in a white chocolate cream enhanced with almond praline. Coated with white chocolate.

ART.NO. 16033



**CRACKLING CHRISTMAS
Apple Pie (alc.)**

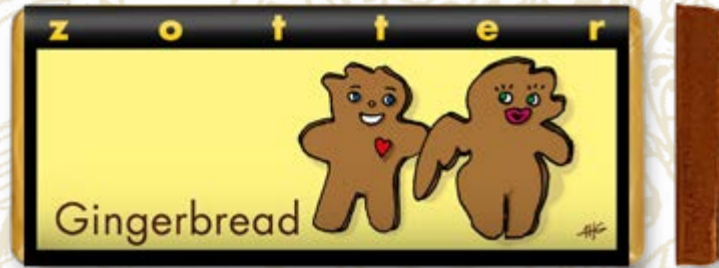
Pieces of dried apples in honey caramel whisper softly in a layer of cinnamon and white chocolate. Enwrapped in milk chocolate.

ART.NO. 16036





WINTER SPECIALS



GINGERBREAD (alc.) contains gluten
According to the Christmas spirit, this chocolate is filled with spicy gingerbread in a cream of dark chocolate, marzipan, coconut and rum. Covered with dark, fine flavour chocolate.

ART.NO. 16299



MULLED WINE (alc.)
Heats up and brightens up the mood when the days are frosty and black. A mulled wine ganache is glowing under a milk chocolate coating, with mountain milk from Tyrolean mountain farmers. With red wine from Schönberger (Burgenland/Austria), the winemaker who used to play in the legendary Austrian music band EAV (Erste Allgemeine Verunsicherung). Notes of cinnamon, cloves and lemon put you into a Christmas mood.

ART.NO. 16300



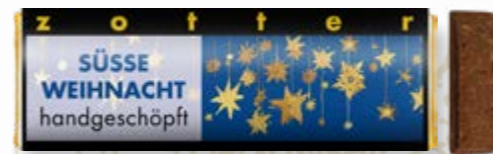
PUNCH (alc.)
A milk chocolate filled with a delicious, cinnamon-enhanced honey ganache, with an orange jelly covered in a thin, white chocolate layer and infused with sublime vodka, mixed in turn into a sweet potato ganache accentuated with a fruity apricot chocolate and a sweet caramel chocolate.

ART.NO. 16457

HAND-SCOOPED CHRISTMAS MINIS



FOR SWEET ANGELS **ART.NO. 17967**
White Chocolate with Brittle
ONLY AVAILABLE WITH GERMAN PACKAGING



SWEET CHRISTMAS **ART.NO. 17968**
Gingerbread (alc.), contains gluten
ONLY AVAILABLE WITH GERMAN PACKAGING



20 g bar
Shelf life: 6 months from production date

25 BARS IN ONE DISPLAY

DRINKING CHOCOLATE



WINTER MAGIC
Almond Coconut with Cinnamon and Orange

A hot chocolate for cold, wintery days created with a combination of nutty almond praline and a white coconut and rice couverture. Oranges, cinnamon and gingerbread spices give it some fruity and seasonal accents.

ONLY AVAILABLE WITH GERMAN PACKAGING

ART.NO. 21070 110 g package
Shelf life: 14 months from production date

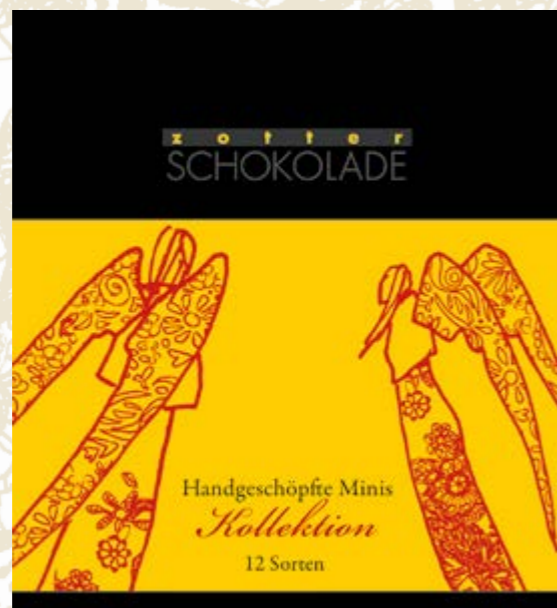
WINTER MAGIC – BULK
Almond Coconut with Cinnamon and Orange

28 pieces including display
ONLY AVAILABLE WITH GERMAN PACKAGING

ART.NO. 21170 22 g bar
Shelf life: 14 months from production date



CHRISTMAS COLLECTION



Varieties

1. Blue Poppyseed
2. ButterCaramel
3. Nut Delight
4. Hemp Bonbon
5. Plum Brandy
6. Raspberry and Coconut
7. Marc de Champagne (alc.)
8. Orange Liqueur (alc.)
9. Thousand Layer Praline
10. Wild Berries with Vanilla
11. Whisky (alc.)
12. White Chocolate with Brittle

HAND-SCOOPED MINIS COLLECTION CHRISTMAS • 12 VARIETIES (alc.)

12 Hand-scooped little chocolates in many different seductive flavours like Marc de Champagne, wild berries and butter caramel, wrapped in a sophisticated gift box with a festive sleeve.

ONLY AVAILABLE WITH GERMAN PACKAGING

ART.NO. 24958

240 g box
Shelf life: 6 months from production date

Varieties

- | | |
|------------------------------|----------------------------------|
| 1. Amarena Cherry | 13. Plum Brandy (alc.) |
| 2. Amaretto-Marzipan (alc.) | 14. Raspberry and Coconut |
| 3. Blue Poppyseed | 15. Marc de Champagne (alc.) |
| 4. ButterCaramel | 16. Milk Cream |
| 5. Caramel Fudge | 17. Praline Variation |
| 6. Chocolate Banana | 18. Orange Liqueur (alc.) |
| 7. Cognac and Coffee (alc.) | 19. Thousand Layer Praline |
| 8. Currant 'n' Chili | 20. Typically Austria |
| 9. Espresso »Macchiato« | 21. Wild Berries with Vanilla |
| 10. Nut Delight | 22. Whisky (alc.) |
| 11. Hemp Bonbon | 23. White Chocolate with Brittle |
| 12. Hazelnut Marzipan (alc.) | 24. Yuzu Citrus |

HAND-SCOOPED MINIS COLLECTION CHRISTMAS • 24 VARIETIES (alc.)

Hand-scooped little chocolate miracles in 24 flavours in a stylish gift box with a festive sleeve. A Christmas indulgence featuring seductive flavours like amaretto and marzipan, orange liqueur, caramel fudge and of course Marc de Champagne.

ONLY AVAILABLE WITH GERMAN PACKAGING

ART.NO. 24957

480 g box
Shelf life: 6 months from production date

Choco Lolly



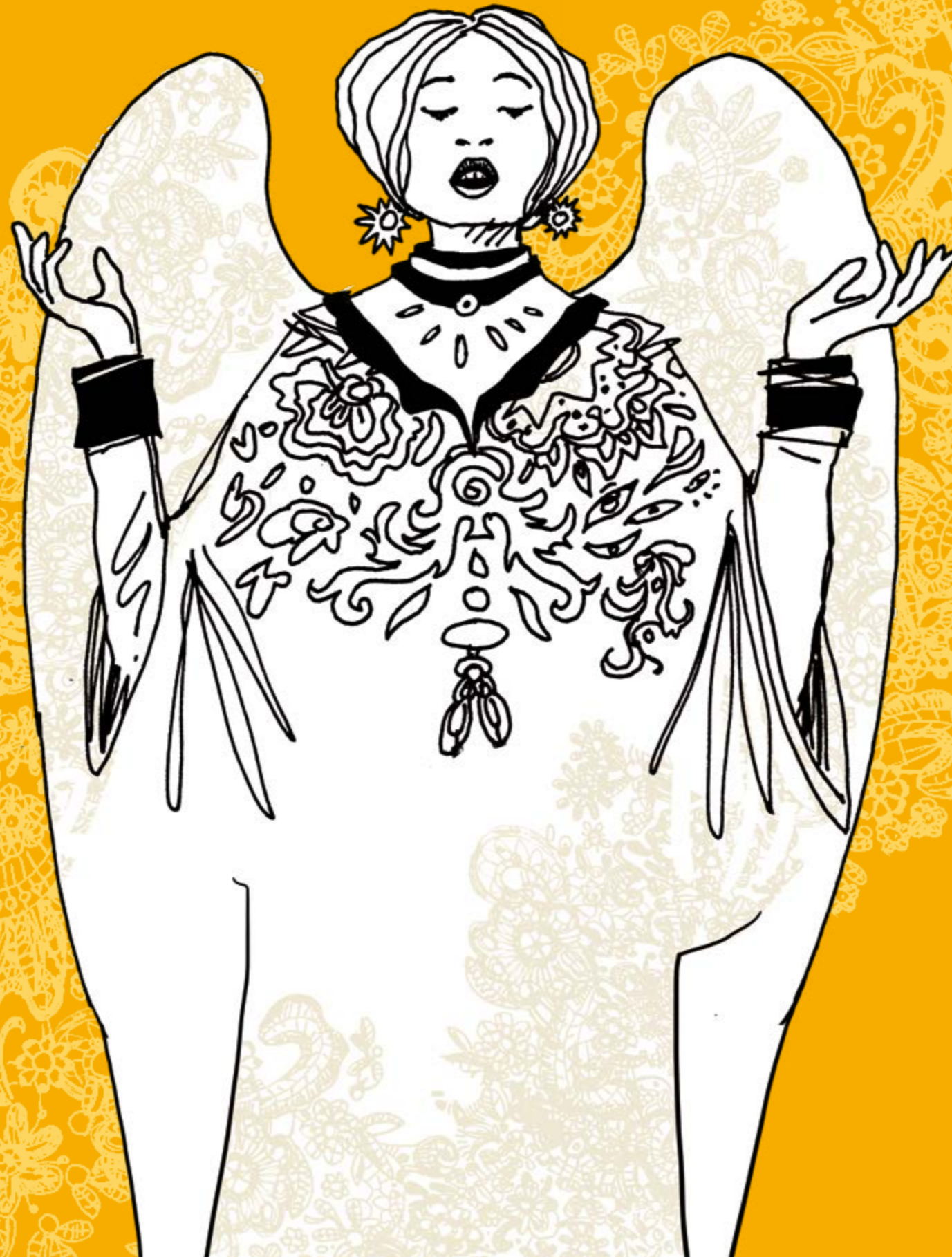
WHITE ANGEL White Chocolate

An angel comes bearing white chocolate made from raw cane sugar, lots of precious cocoa butter and sublime mountain milk.

ONLY AVAILABLE WITH GERMAN
PACKAGING

20 g lollipop
Shelf life: 14 months from production date

ART.NO. 25410



Classic Chocolate

A chocolate classic in a large format with nuts and cinnamon will bring you some Christmas cheer.



HAPPY CHRISTMAS Almond Brittle

ART.NO. 18562

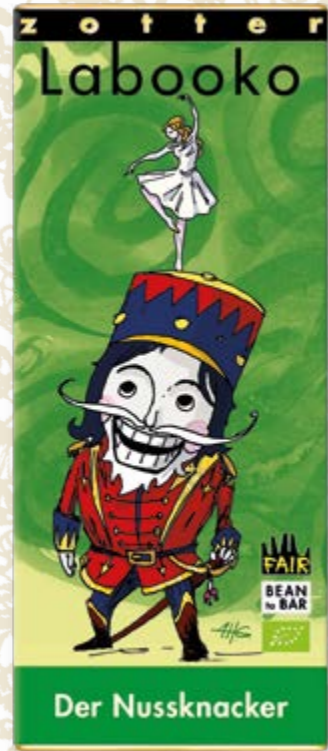
A nutty chocolate bar created with a mixture of almond praline and white chocolate that isn't too sweet but contains lots of organic, whole mountain milk from Austria's Tyrol region as well as crispy almond brittle and a little dash of cinnamon.

ONLY AVAILABLE WITH GERMAN PACKAGING

70 g bar
Shelf life: 14 months from production date

Labooko

WITH FINE CACAO & NUTS



The finest festive chocolate bars.

Using noble cacao and organic nuts, we produce the most sublime pure chocolates, bean to bar.

THE NUT CRACKER – Almond & Walnut

ART.NO. 20172

In a magical transformation, nuts turn into praline. 2 different chocolate bars in one pack: one is homemade almond praline made from roasted and caramelised Spanish almonds and white chocolate. The other is walnut praline with added walnut pieces that have been gently roasted and caramelised in cinnamon.

NEW CACAO

CHIMES – 60% Ecuador & 40% Milk Chocolate Dominican Republic

ART.NO. 20162

Playing light and dark notes. 2 different chocolate bars in one package: one dark single origin chocolate created with the legendary National fine flavour cacao from Ecuador. And one milk chocolate made with the mild and environmentally friendly Zorzal cacao, grown and harvested in a bird sanctuary.

MIRACLES AND TALES – Coffee & Cinnamon Nuts

ART.NO. 20157

Lively and nutty. 2 different bars in one pack: one a homemade walnut praline bar featuring tenderly roasted chopped walnuts, caramelised in cinnamon. The other one a sweet, fragrant coffee chocolate made from fair trade coffee, roasted at Zotter's in-house roastery.

QUIET & UNNOTICED – Fine White Chocolate & Caramel

ART.NO. 20173

White Christmas! 2 different chocolate bars in one pack: one is a white Christmas classic that melts in the mouth both delicately and sweetly, despite the icy outside temperatures. The other is a caramel couverture with a nice bonbon flavour. Sweetened with natural muscovado sugar.

NEW CACAO

CHRISTMAS MAGIC – 72% Belize »Sail Shipped Cacao« & 70% Uganda

ART.NO. 20161

Sophisticated & dark. 2 different chocolate bars in one package: one dark single origin chocolate created with the mythical Maya cacao, transported to us from Belize via sailboat, entirely emission-free. And one dark single origin chocolate made with hand-selected cacao from the "Mountains of the Moon" region in Uganda.



ALL AVAILABLE ONLY WITH GERMAN PACKAGING

2 x 35 g bar

Shelf life: 14 months from production date

CHRISTMASSY MITZI BLUE

65 g disc, shelf life: 14 months from production date

SOFTLY FALLS THE SNOW

Coconut Bar + Coconut Flakes + Cinnamon

These snow flakes are actually coconut flakes and they are fluttering down onto a white coconut chocolate that is hot like the Caribbean. In the middle: a little white Mini Mitzi, festively and deliciously enhanced with orange oil and cinnamon.

ONLY AVAILABLE WITH GERMAN PACKAGING

ART.NO. 24049



GINGERBREAD

Gingerbread Choco + Praline + Nuts

Happy "Pfeffernuesse" - peppered cashew nuts turned into a smooth cashew praline, covered all around with a milk chocolate that's been festively enhanced with roasted hazelnuts, gingerbread spice and cardamom.

ONLY AVAILABLE WITH GERMAN PACKAGING

ART.NO. 24048



STARRY SKY

Cinnamon Bar + Moon + Stars

An entirely vegan Christmas affair with heavenly decor: 3 sweet little coconut stars made from a white coconut couverture and 3 small soy couverture chocolate moons on a festive cinnamon bar created with a white rice chocolate.

ONLY AVAILABLE WITH GERMAN PACKAGING

ART.NO. 24084



FAIR TO HUMANS AND THE ENVIRONMENT



Chocolate for School

A gift that keeps on giving.

50 cents per chocolate sold go to the "Chocolate for School" charity project in Uganda.

Uganda's northern Karamoja region counts among the poorest areas in the country and at the same time it has one of the most challenging climates. There are long periods of drought followed by heavy, prolonged rainfall resulting in floods. This makes agriculture a difficult endeavour. Up to the 2000s, people in this region were largely nomadic until they were forced to settle and attempt to work and cultivate this inhospitable land. The local government didn't build any schools at all, so the Caritas charity eventually decided to build the first small school a few years ago, comprising of just two classrooms. The demand was enormous. Bit by bit, more classrooms and levels were implemented and as of 2020, the school accommodates around 600 primary school pupils from grades 1 to 6. The only thing that hasn't yet grown with the size of the school and the number of children is its canteen.

FOR UGANDAN CHILDREN, SCHOOL LUNCHES ARE OFTEN THEIR ONLY MEAL OF THE DAY.

The children love going to school, in particular because they are served a warm meal made from corn and beans. During the dry season, it's often the only meal they get. **The goal of our "Chocolate for School" project is to help safeguard school lunches for these 600 children and to**



pay for a proper extension to the canteen. We also aim to finance the schoolteachers' salaries: it's very difficult to find teachers willing to work in this remote region, but with the prospect of a decent, regular income, more people might consider taking the job.

With your purchase of a "Chocolate for School" chocolate, you are supporting this campaign and the children of Uganda!

Together we can make a difference and enable the Ugandan children to have access to food and education. At least one nutritious meal a day is the essential minimum children should receive, and maybe with our combined efforts, we can even add the occasional piece of fruit to their plates.

Ahoi! Emission-free sail-shipped cacao

Our cacao from Belize has travelled to us, entirely emission-free, via the sailboat Avontuur. The Avontuur is a 100-year-old two-masted schooner, which was lovingly restored and renovated for 17 months by 100 workers. It has just crossed the Atlantic for the third time, demonstrating that any merchandise can be transported in an eco-friendly manner. 90% of all global trade goods are transported by sea, usually on large diesel-engine container ships. There has so far been a distinct lack of



alternatives to this method of transport. The Avontuur's captain has invested his entire personal fortune in restoring the ship in order to discover new eco-friendly sea routes. The schooner is purely wind-powered, so no substances harmful to the climate are released.

The boat's crew of 15 consists of seven professional sailors in addition to volunteers from all over the world. The Avontuur travels for eight months from Elsfleth near Hamburg via France, Portugal and Tenerife to the Caribbean, where it loads coffee, rum and cacao. All merchandise is hand-selected and the vessel can carry 114 tons of freight, making it the biggest sail cargo ship in the world, but compared to regular container ships, it's still a small fry. The sailboat is now carrying our "Sail Shipped Cacao" for the third time – initially from Nicaragua and now from Belize. In its home port, the Avontuur's merchandise is unloaded by pulley and partly even by hand and is then transported to Austria by train. In order to finance its eco-friendly sea cargo transport and "Mission Zero" approach, the Avontuur crew, cunning pirates that they are, now sell their own Avontuur Sail Rum. The idea has caused quite a stir, and just recently, the Austrian Brigantes ship, one of our collaborators, reported it was ready to set sail. Hail to the eco-friendly sea transport!

Squaring the Circle

THE CHOCOLATES CONTAINING TRENDY SUGAR ALTERNATIVES



NEW

CHRISTMAS MIRACLE Coconut Caramel with Coconut Sugar

ART.NO. 18613

A vegan coconut caramel bar with an exciting coconut flavour and a fine, caramelly sweetness. Created from coconut milk, caramelised, finely milled coconut flakes, 40% cacao and coconut sugar which is derived from the flower buds of the coconut tree and develops a beautiful caramel flavour.

VEGAN

70 g bar
Shelf life: 14 months from production date

ONLY AVAILABLE WITH GERMAN PACKAGING

Crema

Sweet bread spread

NEW

CINNAMON PRALINE ART.NO. 19533

Nutty and spreadable cinnamon praline made with freshly roasted almonds and hazelnuts, which we turn into a fine praline, in-house at our own factory. It's enhanced for more cream with home-pressed almond and hazelnut oils and we've also added lemon-fresh verjus, fragrant rose oil and of course some cinnamon for that X-mas feel.



130 g spread in a jar
Shelf life: 14 months from production date

ONLY AVAILABLE WITH GERMAN PACKAGING

Mi-Xing

Stars

in Christmas-themed gift boxes

NEW VARIETIES



At least 100 g bar
Shelf life: 4 months from production date

STAR WITH ALMOND PRALINE

ART.NO. 45003

A chocolate star made from a fruity-pink raspberry couverture – its intense colour derived entirely from berries. It's filled with a sublime almond praline and has a beautiful festive decor of two sweet cinnamon chocolate stars, crunchy cacao nibs covered in white chocolate, crispy passion fruit chocolate pieces, green tea leaves and the tips of the star were created with candy-sweet caramel and a white coconut couverture.



1



3



5

VEGAN



2



4

VEGAN

NEW VARIETIES

1. STAR WITH PUMPKIN SEED PRALINE

ART.NO. 45000

A chocolate star made from candy-sweet caramel couverture and filled with the finest pumpkin seed praline. It's decorated with two cinnamon chocolate stars, crispy blueberry and passion fruit pieces, fragrant rose petals and green tea leaves and features a pretty white coconut couverture pattern.

2. STAR WITH CINNAMON CENTRE

ART.NO. 45001

A chocolate star made from high-percentage fine flavour chocolate, filled with a festive cinnamon mousse. It's decorated with two sweet raspberry chocolate hearts – their intense colour derived entirely from berries – some crunchy cacao nibs in a pink raspberry couverture, green tea leaves and roasted hemp seeds, which are, of course, entirely THC-free. It also features a pretty pattern created with white chocolate and a fruity apricot couverture.

3. STAR WITH A RASPBERRY CENTRE, *contains gluten*

ART.NO. 45002

A chocolate star made from milk chocolate and filled with a fruity raspberry mousse. It's festively decorated with two white coconut chocolate moons, pure, crunchy cacao nibs – the foundation of all that is chocolate – and more cacao nibs dunked in white chocolate. It also features crispy pink raspberry chocolate flakes, their intense colour derived entirely from berries, and a handmade pattern created with white chocolate and a fruity apricot couverture.

4. VEGAN STAR WITH HAZELNUT BRITTLE

ART.NO. 45004

A vegan chocolate star made with a dark fine flavour chocolate and filled with sublime hazelnut brittle. It's festively decorated with two sweet gingerbread chocolate moons, crimson super food goji berries, roasted hemp seeds, green tea leaves, crispy chocolate flakes and a subtle pattern made with a white, vegan coconut couverture.

5. VEGAN STAR WITH HEMP PRALINE

ART.NO. 45005

A vegan chocolate star made with a white soy chocolate and filled with trendy hemp praline. It's decorated with two small green tea chocolate hearts, crimson super food goji berries, refreshing chocolate mint and caramelised almonds as well as a pretty pattern created with dark chocolate as well as soy chocolate with a 40% cacao content, the ideal sweet milk chocolate alternative.

Hearts

in Christmas-themed gift boxes



1

NEW VARIETIES

1. HEART WITH RASPBERRY BEAT, *contains gluten*

ART.NO. 45006

A chocolate heart made with white chocolate and filled with a fruity raspberry mousse. It's festively decorated with two sweet cinnamon chocolate stars, caramelised almonds, refreshing chocolate mint, crispy raspberry chocolate flakes and crunchy cacao nibs in a candy-sweet caramel couverture. It also features a beautiful almond and milk chocolate pattern.

2. HEART WITH CHRISTMAS STARS

ART.NO. 45008

A chocolate heart made from a dark fine flavour chocolate with a festive, tender-melting caramel praline centre. It's decorated with two sweet caramel vanilla and chocolate stars, crispy orange chocolate pieces, roasted sesame brittle and crunchy cacao nibs in a fruity raspberry couverture – its stunning colour derived entirely from berries. It also features a beautiful pattern created with milk chocolate and a fruity apricot couverture.



2



3

3. HEART WITH CINNAMON MOUSSE

ART.NO. 45007

A chocolate heart made with a fruity-pink raspberry couverture – its intense colour derived entirely from berries – and a festive cinnamon mousse centre. It's decorated with two white gingerbread chocolate moons, fragrant rose petals, green tea leaves, crispy passion fruit chocolate pieces and cacao nibs covered in white chocolate. It also features a beautiful white coconut couverture pattern.

4. VEGAN HEART WITH WALNUT PRALINE

ART.NO. 45009

A vegan chocolate heart made with a dark fine flavour chocolate, filled with festive, tender-melting walnut praline. It's decorated with two white coconut chocolate moons, two green tea chocolate hearts, crimson super food goji berries, roasted sesame brittle and bits of apple rolled in cinnamon. It also features a beautiful pattern created with soy chocolate and a white, vegan couverture.

5. VEGAN HEART WITH HAZELNUT BRITTLE

ART.NO. 45010

A vegan chocolate heart made with a white, purely plant-based rice couverture and filled with a fine hazelnut brittle. It's decorated with two cardamom chocolate stars, crimson goji berries, candied bits of ginger and green tea leaves and also features a beautiful dark chocolate and soy milk chocolate pattern.



4

VEGAN



5

VEGAN

Mi-Xing Mini

in Christmas-themed gift boxes



4 Minis: wrapped in a Christmas-themed gift box
At least 25 g bar, total 100 g



3 Minis: wrapped in a Christmas-themed gift box
At least 25 g bar, total 75 g



2 Minis: wrapped in a Christmas-themed gift box
At least 25 g bar, total 50 g



2 CHRISTMAS MINIS ART.NO. 25799

- Two small chocolate bars with a seasonal decor.
1. One small milk chocolate filled with a sublime, festive cinnamon mousse and decorated with two sweet gingerbread chocolate moons and fragrant rose petals.
 2. One fruity apricot bar filled with a delicious vanilla mousse and decorated with two cinnamon chocolate stars and crunchy cacao nibs in a pink raspberry couverture.

ONLY AVAILABLE WITH GERMAN PACKAGING



2 CHRISTMAS MINIS VEGAN ART.NO. 25800

- Two small vegan chocolate bars with a seasonal decor.
1. One dark fine flavour chocolate decorated with two sweet coconut chocolate moons and bits of apple rolled in cinnamon.
 2. One white coconut bar filled with trendy hemp praline and decorated with two cardamom chocolate stars and crimson super food goji berries.

ONLY AVAILABLE WITH GERMAN PACKAGING

Shelf life: 4 months from production date

NEW VARIETIES

4 CHRISTMAS MINIS, contains gluten ART.NO. 25797

- Four small chocolate bars with a seasonal decor.
1. One dark fine flavour chocolate filled with a sublime, festive cinnamon mousse and decorated with two caramel and vanilla chocolate stars as well as crunchy cacao nibs in white chocolate.
 2. One apricot bar, its stunning colour derived entirely from fruit, decorated with refreshing chocolate mints and crispy raspberry chocolate flakes.
 3. One small milk chocolate filled with almond praline and decorated with two grey poppy seed chocolate hearts and crispy orange chocolate fruit pieces.
 4. One white chocolate bar decorated with two sweet cinnamon chocolate stars and crunchy cacao nibs in a fruity raspberry couverture.

ONLY AVAILABLE WITH GERMAN PACKAGING

3 CHRISTMAS MINIS ART.NO. 25798

- Three small chocolate bars with a seasonal decor.
1. One white coconut bar filled with a sublime vanilla mousse and decorated with two sweet cinnamon chocolate stars and crunchy cacao nibs in a fruity raspberry couverture.
 2. One almond praline bar decorated with desiccated coconut and crispy blueberry chocolate fruit pieces.
 3. One purple blackcurrant bar, its stunning colour and very berry flavour derived entirely from fruit. It's decorated with two caramel vanilla chocolate stars and crispy passion fruit chocolate fruit pieces.

ONLY AVAILABLE WITH GERMAN PACKAGING

VEGAN

CHRISTMAS TREE DECORATION

FESTIVELY DECORATED!



NASHIS CHRISTMAS TREE DECORATION VARIATION DARK CHOCOLATE

10 Christmas tree ornaments with a beautiful Christmas design and fine dark chocolate with varying cacao contents for all chocoholics. Packaged with gold ribbons, all ready for decorating.

Varieties

- Dark Chocolate 60%
- Dark Chocolate 70%
- Dark Chocolate 80%

10 bars at 7 g each = 70 g
Shelf life: 12 months from production date
ONLY AVAILABLE WITH GERMAN PACKAGING

ART.NO. 17852



NASHIS CHRISTMAS TREE DECORATION VARIATION VEGAN CHOCOLATE

10 vegan Christmas tree ornaments in a Christmas design with fine vegan chocolates for nibbling. Packaged with gold ribbons, all ready for decorating.

Varieties

- Soy
- Coconut
- Rice

10 bars at 7 g each = 70 g
Shelf life: 12 months from production date
ONLY AVAILABLE WITH GERMAN PACKAGING

ART.NO. 17853

NASHIS CHRISTMAS TREE DECORATION VARIATION MILK CHOCOLATE

10 Christmas tree ornaments in a Christmas design with fine milk chocolates and little, sweet, white chocolate bars for nibbling. Packaged with gold ribbons, all ready for decorating.

Varieties

- Caramel
- Smooth Milk Chocolate 40%
- White Chocolate

10 bars at 7 g each = 70 g
Shelf life: 12 months from production date
ONLY AVAILABLE WITH GERMAN PACKAGING
ART.NO. 17851

NASHIDO CHRISTMAS TREE DECORATION (alc.) CHOCOLATE MINIS WITH CREAMY FILLINGS

10 Christmas tree ornaments with cool robot angel designs and wafer-thin Nashido bars with creamy centres in 10 fabulous flavours like red wine, grappa and Marc de Champagne, classic ones with mint, fruity ones with redcurrant and raspberry or nutty ones with peanut and hazelnut praline. They come with gold ribbons, ready to hang.

Varieties

- Caramel Praline
- Red Wine (alc.)
- Marc de Champagne (alc.)
- Peppermint
- Hazelnut
- Whisky (alc.)
- Grappa (alc.)
- Redcurrant
- Raspberry
- Peanut

10 bars at 8.5 g each = 85 g
Shelf life: 6 months from production date
ONLY AVAILABLE WITH GERMAN PACKAGING

ART.NO. 17574

NEW VARIETIES

GIFT SETS

BONBONS & CHOCOLATES

Handmade organic bonbons with an elegant, natural flavour. And the iconic Zotter bars spread some proper Christmas spirit with cinnamon praline, caramel, fine flavour chocolate, praline and almonds – what more can we ask for!



BIOFEKT SET – CHRISTMAS 8 + 2 (alc.) ART.NO. 17262

Gift set with 8 organic bonbons and 2 chocolates.
8 handmade organic bonbons in festive flavours like cinnamon, hazelnut praline and salted caramel. All their beautiful colours and natural flavours are derived entirely from chocolate, berries and other fruit. Alongside, there are 2 seductive Christmas chocolates made with exquisite single origin chocolate and a fine butter caramel.

8 bonbons at 6 g each + 2 chocolates at 70 g each = total net weight 188 g
Dimensions of the set: W: 15.5 x H: 14 x D: 3.5 cm
Shelf life: 4 months from production date

With an inlay made from organic plastic, which is created with renewable materials only and thus compostable.

ONLY AVAILABLE WITH GERMAN PACKAGING

NEW VARIETIES

- 2 chocolates:**
1 x Hand-scooped Chocolate:
• Heavenly Delight
1 x Laboko:
• Chimes

- 8 Biofekt bonbons:**
• Cinnamon Endorphin
• Crispy Rice and Almonds
• Sour Cherry Endorphin
• Hazelnut Praline Cube
• Rum Endorphin
• Salted Caramel Pot
• Blackcurrant Endorphin
• Zotter Coffee

BIOFEKT SET – CHRISTMAS 8 + 4 (alc.) ART.NO. 17263

Gift set with 8 organic bonbons and 4 chocolates.
8 handmade organic bonbons in festive flavours like cinnamon, rum, caramel and sour cherry. All their beautiful colours and natural flavours are derived entirely from chocolate, berries and other fruit. Alongside, there are 4 surprising Christmas chocolates made with cinnamon praline, bonbon-sweet caramel, white chocolate, fine hazelnut praline and white chocolate with whole almonds.

8 bonbons at 6 g each + 4 chocolates at 70 g each = total net weight 328 g
Dimensions of the set: W: 15.5 x H: 14 x D: 3.5 cm
Shelf life: 4 months from production date

With an inlay made from organic plastic, which is created with renewable materials only and thus compostable.

ONLY AVAILABLE WITH GERMAN PACKAGING

- 4 chocolates:**
1 x Hand-scooped Chocolate:
• Merry Christmas
1 x Laboko:
• Quiet & Unnoticed
1 x Whole Nuts:
• Almond
1 x Praliné:
Hazelnut

- 8 Biofekt bonbons:**
• Cinnamon Endorphin
• Crispy Rice and Almonds
• Sour Cherry Endorphin
• Hazelnut Praline Cube
• Rum Endorphin
• Salted Caramel Pot
• Blackcurrant Endorphin
• Zotter Coffee

NEW VARIETIES

BIOFEKT POP

Fresh, homemade organic bonbons
rock the festive season with stunning flavour and design



BIOFEKT POP HAPPY CHRISTMAS (alc.)

8 handmade and hand-decorated organic bonbons in nutty and boozy flavours from hazelnut praline to sour cherry or salted caramel, their stunning colours and natural flavour derived entirely from fruit, chocolate and berries. They come wrapped in a festive bonbon box with a fancy Christmas design.

ART.NO. 17414

BIOFEKT POP STAR HOURS (alc.)

8 handmade and hand-decorated organic bonbons in nutty and boozy flavours from cinnamon to caramel to rum. Their stunning colours and completely natural flavour are derived entirely from berries, fruit and chocolate. They come wrapped in a festive bonbon box with a dreamy star design.

ART.NO. 17267

Varieties

- Cinnamon Endorphin
- Crispy Rice and Almonds
- Sour Cherry Endorphin
- Hazelnut Praline Cube
- Rum Endorphin
- Salted Caramel Pot
- Blackcurrant Endorphin
- Zotter Coffee

NEW VARIETIES

8 bonbons at 6 g each = total net weight 48 g
Dimensions of the chocolate box: W: 12.5 x H: 12.5 x D: 3 cm
Shelf life: 4 months from production date

With an inlay made from organic plastic, which is created with renewable materials only and thus compostable.

BOTH ARE ONLY AVAILABLE WITH GERMAN PACKAGING

ENDORPHINS

CHRISTMAS MOOD IN THE SHAPE
OF FILLED BALLS!



The perfect little present
Christmas spirit to give away
- always appropriate, regardless of whether someone is already in a Christmas mood or still needs a bit of Christmas doping - Christmas endorphins are always well received.



Shelf life: 4 months from production date

ENDORPHINS CHRISTMAS MIX ALCOHOL-FREE (3 BALLS)

3 delicious, organic chocolate balls in a fancy stick of chocolates.
Varieties: **Honey • Cinnamon • Orange Passion Fruit**

3 balls at 8 g each = total net weight 24 g
Dimensions of the carton stick: W: 9 x H: 3 x D: 3 cm

ART.NO. 17415

ENDORPHINS CHRISTMAS MIX ALCOHOL-FREE (6 BALLS)

Including display
6 handmade, festively filled chocolate balls in a pretty carton stick as alcohol-free mix in the varieties: **Orange Passion Fruit • Cinnamon • Honey • Cappuccino • Coconut • Pumpkin Seed**
Delivered including a display with 8 chocolate sticks.

ART.NO. 17422

ENDORPHINS CHRISTMAS MIX WITH A BUZZ (6 BALLS)

Including display (alc.), contains gluten
6 fine, handmade filled chocolate balls with an alcohol filling in a pretty carton stick. Varieties: **Gingerbread • Mulled Wine • Rum • Honey • Cinnamon • Orange Passion Fruit**
Delivered including a display with 8 chocolate sticks.

ART.NO. 17416

6 balls at 8 g each = total net weight 48 g
Dimensions of the stick: W: 16.3 cm x H: 3 cm x D: 3 cm
Dimensions of the displays: W: 20 cm x H: 16.6 cm x D: 11.2 cm

ART.NO. 17422 • ART.NO. 17416
will be delivered including a display
with 8 chocolate sticks.



ALL AVAILABLE ONLY WITH GERMAN PACKAGING

CHOCOLATE SETS

NEW VARIETIES

The right present for each and every taste. In every gift box you will find flavour, quality, variety, sustainability and a great design - whether it's big or small, this always fits.



1

2

With Hand-scooped Chocolates and pure Labookos.
FLAVOUR VARIETY IS THE MOST THOUGHTFUL OF GIFTS



3

4

Varieties as shown.
Shelf life: No.5: 14 months from production date, all the others: 5 months from production date
The gift boxes are also available without chocolates.



5



6



1. ZOTTER 02 HAPPY HOLIDAYS

ART.NO. 22121

2 Christmas chocolates that will seduce you not with alcohol but instead with French white nougat, cinnamon nuts and a delicious coffee concoction – all wrapped in a festive gift box. Varieties: From the Christmas Workshop (Hand-scooped), Miracles and Tales (Labooko).

2. ZOTTER 02 SWEET CHRISTMAS

ART.NO. 22105

2 completely vegan Christmas chocolates that will excite you with a fine hazelnut praline with brittle and some sublime dark single origin chocolate – all wrapped in a festive gift box. Varieties: Happy Holidays (Hand-scooped), Christmas Magic (Labooko).

3. ZOTTER 02 CHRISTMAS

ART.NO. 22010

2 festive chocolates, packaged in a gift box with a transparent sleeve. Varieties: Heavenly Delight (Hand-scooped), Christmas Magic (Labooko).

4. ZOTTER 05 CHRISTMAS

ART.NO. 22020

5 festive chocolates, packaged in a gift box with a transparent sleeve. Varieties: Ho ho ho, From the Christmas Workshop, Marzipan Angel (all Hand-scooped), The Nut Cracker, Miracles and Tales (both Labooko).

5. LABOOKO 05 MERRY CHRISTMAS

ART.NO. 20593

5 Christmas Labookos wrapped in a gift box with a transparent protective sleeve. Varieties: Chimes, Quiet & Unnoticed, Miracles and Tales, Christmas Magic (vegan), The Nut Cracker



6. ZOTTER 05 CHRISTMAS VARIATION (alc.)

ART.NO. 29182

5 chocolates wrapped in a gift box with a transparent protective sleeve. Varieties: Christmas Magic, Merry Christmas (both Hand-scooped), Chimes (Labooko), Cashew (Whole Nuts) and Almond (Praliné).

NEW YEAR

HAND-SCOOPED CHOCOLATE

NEW

LUCKY CHARM Milk Choco Mousse

ART.NO. 16555

A wonderfully soft filling of tender-melting mousse, this sweet milk chocolate with a 40% cacao content is buttery-fine and delicious. It's hugged by a dark milk chocolate boasting 60% cacao power, offering an exciting contrast.



HAPPY NEW YEAR Marc de Champagne (alc.)

ART.NO. 16298

A Fleury Marc de Champagne, organic and bearing a Demeter certification, enveloped by a dark chocolate ganache, it will get you into the festive spirit. It comes covered in a dark, 70% chocolate.



BIOFEKT POP

NEW DESIGN & VARIETIES

HAPPY NEW YEAR (alc.)

New Year's chocolate box with 8 hand-made, organic bonbons of the varieties:

- Cinnamon Endorphin
- Crispy Rice and Almonds
- Sour Cherry Endorphin
- Hazelnut Praline Cube
- Rum Endorphin
- Salted Caramel Pot
- Blackcurrant Endorphin
- Zotter Coffee

8 bonbons at 6 g each = 48 g
Dimensions of the box:
W: 12.5 x H: 12.5 x D: 3 cm
Shelf life: 4 months from production date

ART.NO. 17268



LABOOKO

NEW DESIGN

PIECES OF PURE JOY

Coconut & 70% Dark Chocolate

ART.NO. 20154

Exotic & dark: 2 different bars in one package: one a sophisticated coconut chocolate with coconut flakes and coconut milk substituting the customary cow's milk. A vegan chocolate with a seriously exotic flavour! The other one a dark chocolate with a 70% cacao content, made from fine, noble cacao, which we transform, bean to bar, into a sublime, high percentage chocolate bar.



VEGAN

ONLY AVAILABLE WITH GERMAN PACKAGING

Mi-Xing New Year

WRAPPED IN DECORATIVE GIFT BOXES

NEW VARIETIES

At least 100 g bar
Shelf life: 4 months from production date



4 NEW YEAR'S EVE MINIS ART.NO. 25804

Four small chocolate bars with 2021 lettering and a four-leaf clover.

1. + 4. Two small, white coconut bars filled with a fruity raspberry mousse and decorated with 2021 lettering in a dark fine flavour chocolate.

2. + 3. Two fruity apricot bars, their stunning colour derived entirely from fruit, decorated with crunchy cacao nibs in a fruity raspberry couverture and green tea chocolate hearts in the shape of a four-leaf clover.

NEW YEAR'S EVE CHOCOLATE (alc.) ART.NO. 25801

A pink raspberry bar, its stunning colour and very berry flavour derived entirely from fruit, filled with a festive Marc de Champagne chocolate mousse. It's decorated with 2021 lettering created with a white coconut couverture as well as some bits of apple rolled in cinnamon, some sesame brittle and crispy passion fruit and blueberry chocolate fruit pieces as well as a handmade, white four-leaf clover created with green tea leaves.

NEW YEAR'S EVE HEART ART.NO. 25802

A milk chocolate heart filled with a sublime vanilla mousse. It's decorated with 2021 lettering created with a purely plant-based white couverture, crispy blueberry chocolate fruit pieces, crunchy cacao nibs in a pink raspberry couverture, bits of apple rolled in cinnamon and a handmade four-leaf clover made from green tea leaves and chocolate.

ONLY AVAILABLE WITH GERMAN PACKAGING

NEW YEAR'S EVE CHOCOLATE FORTUNE ART.NO. 24307

A round, white chocolate filled with a sublime hazelnut praline and some crunchy pork cracklings. It's decorated with a four-leaf clover made from green tea chocolate hearts and 2021 lettering created with a fruity-pink raspberry couverture. Also featuring some crispy blueberry chocolate fruit pieces, green tea leaves and caramelised almonds. This chocolate's stunning colours are derived entirely naturally from berries and tea.

ONLY AVAILABLE WITH GERMAN PACKAGING



z o t t e r
CHOCOLATE

z o t t e r Schokolade GmbH

Bergl 56 • 8333 Riegersburg • Austria

Phone: +43 - 3152 - 55 54 • Fax: +43 - 3152 - 55 54 - 3222

schokolade@zotter.at • www.zotter.at

Commercial register no.: regional civil court ZRS Graz,
FN 220619s

VAT no.: ATU 53816900

Choco Shop Theatre & Edible Zoo

Opening hours

May - September: Mon to Sat: 9 am - 8 pm

October - April: Mon to Sat: 9 am - 7 pm

Closed on Sundays and public holidays.

